

Some new localities of Chinese longhorn beetles (Coleoptera, Cerambycidae)

Mei-Ying LIN

Key Laboratory of Zoological Systematics and Evolution,

Institute of Zoology, Chinese Academy of Sciences,

1 Beichen West Road, Chaoyang,

Beijing 100101, China

Email: linmeiyang@ioz.ac.cn

Abstract

New localities, mostly in province level, are added to 58 species of Cerambycidae from China. 100 pictures of specimens from new localities or ecological photos are present.

Key words

New locality, longhorn beetles, China, Oriental

Introduction

During the process of preparing a popular science writing named “A Photographic Guide to Longhorn beetles of China”, a lot of ecological photos were gathered for choice. The author picked up 300 species for identification. Some ecological photos were taken from new localities. These new localities were added to the distribution list in that book without any marking. On the one hand, few taxonomists or scientific researchers will cite the popular science book. On the other hand, the popular science book is written in only Chinese so the new information is difficult to be known by non-Chinese readers. Therefore, the new localities are reported in this paper, which should be published before the printing of the book. Except for the ecological photos, some related specimens in Institute of Zoology, Chinese Academy of Sciences (IZAS) were studied and pictured. Some species with new localities but not included in the photographic guide book are also reported in this paper.

The species order follows Catalogue of Palaearctic Coleoptera, Vol. 6. (Löbl & Smetana, 2010). The references about the genera or tribe, and the synonyms and combinations of each species are ignored in this paper, though the citation of each species comprised of them.

Materials

Materials are mostly from IZAS, or else the depository are marked with full names or abbreviations:

BFU: Beijing Forestry University, Beijing, China.

CCH: Collection of Carolus Holzschuh, Villach, Austria.

CCCC: Collection of Chang-Chin Chen, Tianjin, China.

IZAS: Institute of Zoology, Chinese Academy of Sciences, Beijing, China.

MNHN: Muséum National d'Histoire Naturelle, Paris, France.

NHML: The Natural History Museum, London, UK.

NMB: Naturhistorisches Museum, Basel, Switzerland (including ex Museum G. Frey, Tutzing).

USNM: National Museum of Natural History (Smithsonian), Washington, USA.

Taxonomy

Family CERAMBYCIDAE Latreille, 1802

Subfamily Prioninae Latreille, 1802

Tribe Aegosomatini J. Thomson, 1861

Genus *Aegosoma* Audinet-Serville, 1832

Type species. – *Cerambyx scabricornis* Scopoli, 1763.

1. *Aegosoma sinicum sinicum* White, 1853 (Fig. 1)

New to Shaanxi.

Aegosoma sinicum White, 1853: 30. Type locality: China, Shanghai. Type depository: NHML.

Aegosoma amplicolle Motschulsky, 1854: 48. Type locality: China, environs of Beijing (environs de Pékin). Type depository: Zoological Museum, University of Moscow.

Megopsis (Aegosoma) sinica corniculum Yoshida, 1931: 273. Type locality: China, Taiwan. Type depository: unknown. Synonymized by Gressitt, 1951: 16.

Specimens examined. – Heilongjiang: 1 ♂, Mudanjiang, Wulongshan, 2009-VI-31, *leg.* Ye Liu by light trap. Beijing: 1 ♂, Haidian, Zhongguancun, 2002-VII-8 (IOZ(E) 1896795). Henan: 1 ♂, Luoshan, Lingshan, Lingshan, Dongzhai, 31.91057°N, 114.21796°E, alt. 415 m, 2006-VI-23, *leg.* Liu Y., Liang H. B., Teiji Sota; 1 ♀, Shangcheng, Suxianhe, Donghe village, 31.74098°N, 115.55499°E, alt. 504 m, 2006-VI-25, *leg.* Liu Y., Liang H. B., Teiji Sota. Shaanxi: 1 ♂, Zhouzhi County, Jianxianzhen, Lixincun, 2006.-II-16, *leg.* Mei-Ying Lin by light trap.

Picture examined. – Fig. 1, taken from Qinling of Shaanxi, by Wei-Wei Zhang in August, 2011; identified by Alain Drumont.

Distribution. – Heilongjiang, Jilin, Liaoning, Inner Mongolia, Beijing, Hebei, Shanxi, Shandong, Henan, Shaanxi (new Province record), Gansu, Jiangsu, Shanghai, Anhui, Zhejiang, Hubei, Jiangxi, Hunan, Fujian, Taiwan, Hainan, Guangxi, Sichuan, Guizhou, Yunnan; Russian, North Korea, South Korea, Japan, Vietnam, Laos, Myanmar, Thailand.

Family LEPTURINAE Latreille, 1802

Tribe Lepturini Latreille, 1802

Genus *Leptura* Linnaeus, 1758

Type species. – *Leptura quadrifasciata* Linnaeus, 1758. Amur. Type depository: MNHN.

2. *Leptura duodecimguttata* Fabricius, 1801 (Figs 2–4)

New to Beijing and Hebei.

Leptura 12guttata Fabricius, 1801: 363. Type locality: Russia, Siberia. Type depository: Zoologisk Museum, Copenhagen, ex Musaeo Tønder Lund > J.C. Fabricius.

Stenura 12-guttata: Motschulsky, 1860: 146.

Strangalia 12-guttata var. *mediojuncta* Pic, 1902: 10. Type locality: Russia, Siberia. Type depository: MNHN.

Leptura (Strangalia) 12-guttata v. *bisbijuncta* Pic, 1904: 14. Type locality: Russia, Siberia. Type depository: MNHN.

Leptura 14-guttata: Heyden, 1909: 160. misspelling.

Leptura (Strangalia) 12-guttata var. *kupfereri* Pic, 1912: 89. Type locality: Russia, Siberia. Type depository: MNHN.

Strangalia 12-guttata var. *subobliterata* Pic, 1927: 10. Type locality: Russia, Siberia. Type depository: MNHN.

Strangalia 12-guttata var. *mediosemijuncta* Pic, 1927: 13. Type locality: Russia, Siberia. Type depository: MNHN.

Strangalia duodecimguttata: Heyrovský, 1934: 10, 12.

Leptura (s. str.) duodecimguttata duodecimguttata: Gressitt, 1951: 98.

Specimens examined. – Beijing: 1 ♂, Yanqing County, Songshan, 2013-VI-9 (BFU); 1 ♀, Songshan, 2010-VI, leg. Lu-Yi Li (BFU). Hebei: 8 ♂♂, 2 ♀♀, Xiaowutaishan, Nantai, alt. 1700 m, 1964-VII-1/5, leg. Chun-Guang Wang, Yin-Heng Han, Bing-Qian Li; 1 ♂, 1 ♀, same data but alt. 2500 m, 1964-VII-2, leg. Chun-Guang Wang; 1 ♀, same data but alt. 1400 m, 1964-VII-14, leg. Chun-Guang Wang; 1 ♂, Xiaowutaishan, Huichuan, alt. 1400 m, 1964-VII-14, leg. Yin-Heng Han; 1 ♂ (Fig. 3), Wulingshan, alt. 800 m, 1980-VI-1, leg. Pei-Yu Yu. Shaanxi: 1 ♂ 5 ♀♀, (Fig. 4), Zhouzhi County, Houzhenzizhen, Qinlingliang, alt. 2021 m, 33.81491°N, 107.74357°E, 2007-V-27, Jun-Zhi Cui, Mei-Ying Lin & Li-Jie Zhang; 1 ♀, Zhouzhi County, Houzhenzizhen, Laoxianchengcun, 1670–1760 m, 2008-VI-28, leg. Jun-Zhi Cui.

Picture examined. – Fig. 2, taken from Miyun of Beijing by Chao Wu in August, 2013; identified by Nobuo Ohbayashi.

Distribution. – Heilongjiang, Jilin, Liaoning, Inner Mongolia, Beijing (new record), Hebei (new Province record), Henan, Shaanxi, Qinghai, Zhejiang, Fujian, Sichuan, Russian, Mongolia, North Korea, South Korea, Japan, Kazakhstan.

Remarks. – Löbl & Smetana (2010) misspelled SHA as SHX. According to Hua (2002) and Hua *et al.* (2009), this species was recorded from Shaanxi, but not recorded from Shanxi. Also specimens from Shaanxi are found during this study.



1. *Aegosoma sinicum sinicum* White, 1853, taken from Shaanxi, Qinling by Wei-Wei Zhang in August, 2011. 2–4. *Leptura duodecimguttata* Fabricius, 1801: 2. taken from Beijing, Miyun by Chao Wu in August, 2013; 3. ♂ from Hebei; 4. ♀ from Shaanxi. 5. *Leptura naxi* Holzschuh, 1998, taken from Xizang, Lulang by Bo Lei in July, 2012. 6. *Leptura tatsienlua* Gressitt, 1948, taken from Xizang, Lulang by Bo Lei in July, 2012. 7. *Pachyta felix* Holzschuh, 2007, taken from Xizang, Bomi by Chao Wu in 2013. 8. *Pidonia gibbicollis* (Blessig, 1873), taken from Liaoning, Benxi, Yanghugoucun by Zi-Long Shan in June 2011. 9. *Rhondia pugnax* (Dohrn, 1878), taken from Xizang, Tongmai by Ye Liu in July 2011. 10–11. *Stenocorus amurensis* (Kraatz, 1879): 10, taken from Beijing, Songshan by Yi-Zhou Liu in July 2013; 11, taken from Liaoning, Fengcheng, Liujiahe, by Jiang Wang in June, 2013.

3. *Leptura naxi* Holzschuh, 1998 (Fig. 5)

New to Xizang.

Leptura naxi Holzschuh, 1998: 21, fig. 27. Type locality: China, Yunnan. Type depository: CCH.

Picture examined. – Fig. 5, taken from Xizang, Lulang by Bo Lei in July, 2012; identified by Nobuo Ohbayashi.

Distribution. – Yunnan, Xizang (new record).

4. *Leptura tatsienlua* Gressitt, 1948 (Fig. 6)

New to Xizang.

Leptura tatsienlua Gressitt, 1948: 45, pl. 1, fig. 5. Type locality: China, Sichuan (near Tatsienlu, Sikang Prov). Type depository: USNM.

Picture examined. – Fig. 6, taken from Xizang, Lulang by Bo Lei in July, 2012; identified by Nobuo Ohbayashi.

Distribution. – Sichuan, Xizang (new record).

Remarks. – This species was considered as junior synonym of *Leptura guerryi* Pic, 1902, but not followed by all authors. Here we followed Löbl & Smetana (2010) to treat it as a separate species.

Tribe Rhagiini Kirby, 1837

Genus *Pachyta* Dejean, 1821

Type species. – *Leptura quadrimaculata* Linnaeus, 1758.

5. *Pachyta felix* Holzschuh, 2007 (Fig. 7)

New to Xizang.

Pachyta felix Holzschuh, 2007: 182, fig. 5. Type depository: CCH.

Picture examined. – Fig. 7, taken from Xizang, Bomi by Chao Wu in 2013; identified by Nobuo Ohbayashi.

Distribution. – Yunnan, Xizang (new record).

Genus *Pidonia* Mulsant, 1863

Type species. – *Leptura lurida* Fabricius, 1792.

6. *Pidonia gibbicollis* (Blessig, 1873) (Fig. 8)

New to Liaoning.

Leptura (Anoplodera) gibbicollis Blessig, 1873: 258. Type locality: Russia, Siberia (Amur zwischen dem Bureja-Gebirge und der Ussuri Mündung (R); am Suyfun beim Dorfe Nikolskoje und beim Posten Baranowsky, auch bei Wladiwostock). Type depository: Collection of Zoological Institute of the Russian Academy of Sciences, Saint-Petersbourg.

Grammoptera gibbicollis: Kraatz, 1879: 87.

Leptura (Pidonia) gibbicollis: Bates, 1888: 378.

Pseudopidonia gibbicollis: Pic, 1902: 25. (misspelling)

Pseudopidonia gibbicollis var. *marginata* Pic, 1931: 258. Type locality: Russia, Siberia, Amur. Type depository: MNHN.

Pidonia (Pseudopidonia) gibbicollis: Tamanuki, 1942: 39.

Specimens examined. – Heilongjiang: 1 ♀, Wuchang, 1970-VIII-9, N° 11. Jilin: 1 ♂, Tumen, 1980. Liaoning: 1 ♀, Qingyuan, 1954-VI-3, and 13 specimens only labeled as NE China, and 12 specimens without locality labels but should be also from NE China.

Picture examined. – Fig. 8, taken from Liaoning, Benxi, Yanghugoucun by Zi-Long Shan in June 2011; identified by Nobuo Ohbayashi.

Distribution. – Heilongjiang, Jilin, Liaoning (new Province record); North Korea, South Korea, Russia, Japan, Mongolia.

Genus *Rhondia* Gahan, 1906

Type species. – *Leptura (Capnolymma ?) pugnax* Dohrn, 1878.

7. *Rhondia pugnax* (Dohrn, 1878) (Fig. 9)

New to Xizang.

Leptura (Capnolymma ?) pugnax Dohrn, 1878: 459. Type locality: Myanmar (Birma). Type depository: Musaeo Zoologia Polonicum, Warsawa.

Rhondia pugnax: Gahan, 1906: 80.

Picture examined. – Fig. 9, taken from Xizang, Tongmai by Ye Liu in July 2011; identified by Nobuo Ohbayashi.

Distribution. – Guangxi (?), Xizang (new record); India, Myanmar (The Sichuan report was based on misidentification of *Rhondia bispinosa* Holzschuch, 1998. I did not found any Guangxi material to clarify the doubtful report).

Genus *Stenocorus* Geoffroy, 1762

Type species. – *Leptura meridiana* Linnaeus, 1758.

8. *Stenocorus amurensis* (Kraatz, 1879) (Figs 10–11)

New to Beijing and Liaoning.

Toxotus amurensis Kraatz, 1879: 100. Type locality: Russia, Siberia, Amur. Type depository: Deutsches Entomologisches Institut, Eberswalde.

Toxotus amurensis var. *lateobscurus* Pic, 1904: 13. Type locality: Russia, Siberia. Type depository: MNHN.

Toxotus sachalinensis Matsumura, 1911: 133. Type locality: Russia, Sakhalin Island. Type depository: Entomological Museum, Hokkaido University, Sapporo.

Stenocorus amurensis: Aurivillius, 1912: 79.

Stenochorus amurensis var. *diversipennis* Pic, 1915: 4. Type locality: Russia, Siberia, Amour. Type depository: MNHN.

Specimens examined. – Beijing: 1 ♂, 1 ♀, Yanqing County, Songshan, 2013-VI-10 (BFU); 1 ♀, Songshan, 2010-VI, leg. Xi Liang (BFU), and several specimens from NE China. Liaoning: 1 ♀, Gaolingzi, 1940-VII-20; 1 ♀, Xinjin, 1940, Xiang Liu.

Picture examined. – Fig. 10, taken from Beijing, Songshan by Yi-Zhou Liu in July 2013; identified by Nobuo Ohbayashi. Fig. 11, taken from Liaoning, Fengcheng, Liujiache by Jiang Wang in June, 2013, identified by Nobuo Ohbayashi and Mikhail Danilevsky.

Distribution. – Heilongjiang, Jilin, Liaoning (new Province record), Beijing (new record); Russia, North Korea, South Korea.

Subfamily Spondylidinae Audinet-Serville, 1832

Tribe Asemini J. Thomson, 1861

Genus *Asemum* Eschscholtz, 1830

Type species. – *Cerambyx striatus* Linnaeus, 1758.

9. *Asemum striatum* (Linnaeus, 1758) (Fig. 12)

New to Liaoning.

Cerambyx striatus Linnaeus, 1758: 396. Type locality: Sweden. Type depository: Zoologiska Institutionen, Uppsala.

Callidium striatum: Fabricius, 1775, 191.

Asemum striatum: Eschscholtz, 1830: 66.

Picture examined. – Fig. 12, taken from Liaoning, Benxi, Pingdingshan garden by Zi-Long Shan in June 2011.

Distribution. – Heilongjiang, Jilin, Liaoning (new Province record), Inner Mongolia, Xinjiang, Zhejiang; Russia, Mongolia, North Korea, South Korea, Japan, Kyrgyzstan, Kazakhstan, Turkey, Europe.

Remarks. – This is a dangerous species, and had been reported from North America. The long synonyms list was not shown in this paper.

Subfamily Cerambycinae Latreille, 1802

Tribe Anaglyptini Lacordaire, 1868

Genus *Anaglyptus* Mulsant, 1839

Type species. – *Leptura mystica* Linnaeus, 1758.

10. *Anaglyptus gressitti* Holzschuh, 1999 (Figs 13–16)

New to Zhejiang, Jiangxi, Guangdong and Guangxi.

Anaglyptus gressitti Holzschuh, 1999: 42, fig. 58. Type locality: Fujian, Guadun (Kuatun). Type depository: NMB.

Specimens examined. – Zhejiang: 1 ♂ (Fig. 13), T'ienmu Shan, 1937-V-8, O. Piel coll. (IZAS); 1 ♀, T'ienmu Shan, 1937-VII-22; 1 ♀, Lin'an, Xitianmushan, Longfengjiantingchchang to Xianrending (the Dengshanlu = the road for climbing), 2006-VI-30, leg. Han; 1 ♀, Qingyuan, Baishanzu, alt. 1300 m, 1994-IV-19, leg. Zhong Xu. Jiangxi: 1 ♂ (Fig. 14), Shangrao City, Sanqingshan, 2011-V-29, leg. Hui Lu (IOZ(E)1896974); 1 ♂, Lushan, 1979-X-26. Guangdong: 1 ♀ (Fig. 15), Ruyuan County, Nanlingbaohuqu, Xiaohuangshan, alt. 1318 m, 2008-VII-18, leg. Hong-Bin Liang by beating. Guangxi: 1 ♂ (Fig. 16), Nanning, Damingshanbaohuqu, Hanjiang station, alt. 530 m, 23.53571°N, 108.33905°E, leg. Kai-Qin Li; 1 ♀, Nanning, Damingshanbaohuqu, alt. 1230 m, 23.48911°N, 108.47356°E, leg. Hong-Xia Xu.

Distribution. – Zhejiang (new Province record), Jiangxi (new Province record), Fujian, Guangdong (new Province record), Guangxi (new Province record).

Remarks. – The specimens from Zhejiang, Tianmushan were misidentified as *Anaglyptus (Aglaophis) nokosanus* (Kano, 1933). The report of *Anaglyptus (Aglaophis) producticollis* Gressitt, 1951 from Guangxi by Yang and Huang (2013) was also misidentification of this species (Jian-Hua Huang, personal communication in July, 2014).

11. *Anaglyptus (Aglaophis) nokosanus* (Kano, 1930) (Fig. 17)

Only distribute in Taiwan.

Aglaophis nokosanus Kano, 1930: 46, fig. 5. Type locality: Taiwan, Alishan (Formosa, Arian). Type depository: National Science Museum of Tokyo.

Anaglyptus (Aglaophis) nokosanus: Gressitt, 1951: 305, pl. 11, fig. 7.

Specimens examined. – Taiwan: 1 ♂, Gaoxiong County, Xinanshan, alt. 1600 m, 1995-IV-17, leg. WenI Chou (IOZ(E) 1896966); 1 ♀, same data.

Distribution. – Taiwan.

Remarks. – The report from Fujian should be misidentification of *A. gressitti* Holzschuh, 1999, based on Holzschuh (1999). Zhejiang should be based on misidentification of *A. gressitti*, based on specimens from IZAS. Hubei could be the same situation.

12. *Anaglyptus vicinulus* Holzschuh, 1999 (Figs 18–20)

New to Beijing

Anaglyptus vicinulus Holzschuh, 1999: 41, Abb. 56. Type locality: Gansu. Type depository: CCH.

Specimens examined. – Beijing: 1 ♂ (Fig.19), Distr. Mentougou, Qingshuizhen, Xiaolongmen, 39.96466–39.95005°N, 115.4358–115.4857°E, alt. 739–1117 m, 2007-V-6, leg. Hong-Liang Shi & Ye Liu (IOZ(E) 1896965). Shaanxi: 1 ♂ (Fig.20), Huayin City, Mt. Huashan, alt. 770–1618 m, 34.4971–34.4934°N, 110.0932–110.0812°E, leg. Mei-Ying Lin (IOZ(E) 1896967).

Picture examined. – Fig.18 taken by from Beijing by Ye Liu in May 2007.

Distribution. – Shaanxi, Gansu, Beijing (new record), Hubei, Sichuan.

Genus *Paraclytus* Bates, 1884

Type species. – *Paraclytus excultus* Bates, 1884.

13. *Paraclytus apicicornis* (Gressitt, 1937) (Fig. 21)

New to Jiangxi.

Aglaophis apicicornis Gressitt, 1937a: 92. Type locality: Sichuan. Type depository: National Museum of Natural History (Smithsonian).

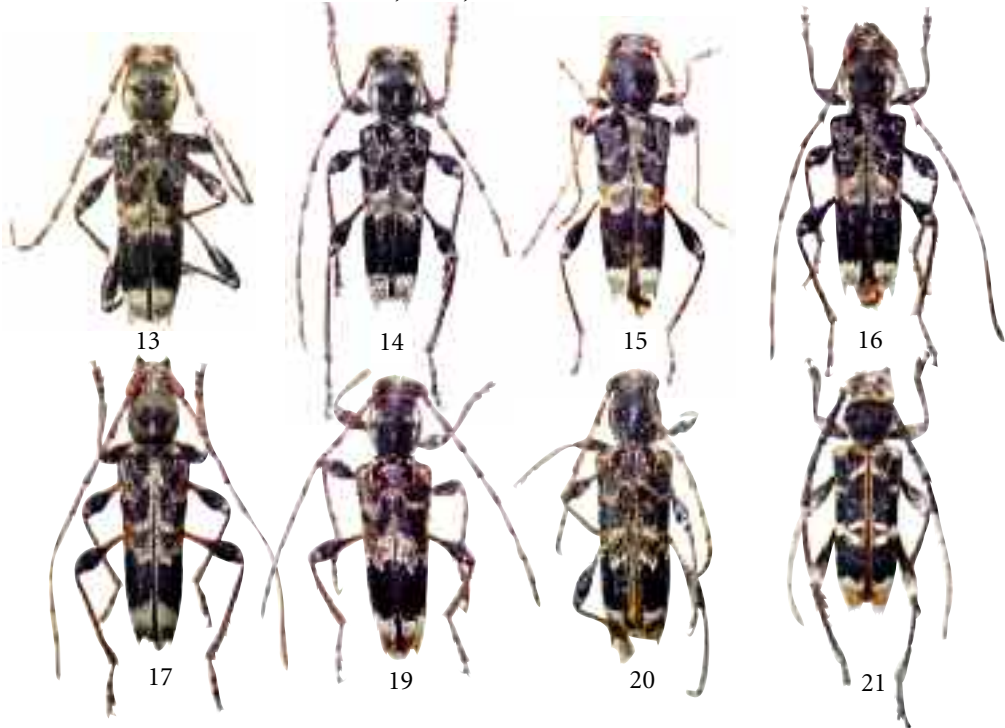
Anaglyptus (Aglaophis) apicicornis: Gressitt, 1951: 303, 305.

Paraclytus apicicornis: Holzschuh, 2003: 228.

Specimens examined. – 1 ♂ (Fig. 21), Jiangxi Province, Shangrao City, Sanqingshan, 2011-V-29, leg. Hui Lu (IZAS, IOZ(E)1896964); 1 ♀, Sichuan, Mianzhu, Qingpinglinchang, 1981-VI-5 (IZAS, head and prothorax lost).

Distribution. – Gansu, Shaanxi, Sichuan, Guizhou, Jiangxi (new Province record), Hunan, Fujian, Guangxi.

Remarks. – Other specimens deposited in IZAS had been mentioned by Miroshnikov (2014). For the three provinces known only from literature, we concluded that Fujian should have this species based on the report from Jiangxi, which is near Fujian; we suspected that Shaanxi might not have this species and the old record was based on misidentification of *P. shaanxiensis* Holzschuh, 2003; and we don't have new idea on Gansu.



13–16. *Anaglyptus gressitti* Holzschuh, 1999: 13, ♂ from Zhejiang; 14, ♂ from Jiangxi; 15, ♀ from Guangdong; 16, ♂ from Guangxi. 17. *Anaglyptus (Aglaophis) nokosanus* (Kano, 1933), ♂ from Taiwan. 19–20. *Anaglyptus vicimulus* Holzschuh, 1999: 19, ♂ from Beijing; 20, ♂ from Shaanxi. 21. *Paraclytus apicicornis* (Gressitt, 1937), ♂ from Jiangxi.



12



18



27



23



22



24



25



26

12. *Asemum striatum* (Linnaeus, 1758), taken from Liaoning, Benxi, Pingdingshan garden by Zi-Long Shan in June 2011. 18. *Anaglyptus vicinulus* Holzschuh, 1999, taken from Beijing by Ye Liu in May 2007. 22. *Aphrodisium sinicum* (White, 1853), taken from Zhejiang, Longwangshan by Jian-Qing Zhu in June 2012. 23–26. *Chloridolum (Leontium) lameeri* (Pic, 1900): 23, taken from Anhui, Jinzhai by Jin Chen in May 2012; 24, ♂ from Shaanxi; 25, ♀ from Gansu; 26, ♂ from Guangxi. 27. *Polyzonus bizonatus* White, 1853, taken from Zhejiang, Tianmushan by Bo Peng in August 2010.

Tribe Callichromatini Swainson & Shuckard, 1840

Genus *Aphrodisium* J. Thomson, 1864

Type species. – *Callichroma cantori* Hope, 1840.

14. *Aphrodisium sinicum* (White, 1853) (Fig. 22)

New to Zhejiang.

Callichroma sinicum White, 1853: 159. Type locality: N. China. Type depository: NHML.

Chelidonium sinicum: Aurivillius, 1912: 316.

Aphrodisium sinicum: Gressitt, 1939a: 23.

Specimens examined. – Guangdong: 1 ♀, Kwangtung, Lobou (Lupao). Yunnan: 1 ♀, Xishuangbanna, Menghun, alt. 1200 m, 1958-V-21, leg. Xu-Wu Meng; 1 ♂, same data but 1958-V-18; 1 ♂, same data but alt. 1200–1400 m, 1958-V-22, leg. Chun-Pei Hong.

Picture examined. – Fig. 22 taken from Zhejiang, Longwangshan by Jian-Qing Zhu in June 2012, identified by Eduard Vives.

Distribution. – Distribution. Zhejiang (new Province record), Hubei, Fujian, Guangdong, Sichuan, Yunnan; Myanmar, Laos.

Genus *Chloridolum* J. Thomson, 1864

Type species. – *Callichroma bivittatum* A. White, 1853.

15. *Chloridolum (Leontium) lameeri* (Pic, 1900) (Fig. 23–26)

New to Shaanxi, Gansu, Anhui and Guangxi.

Leontium lameeri Pic, 1900: 18. Type locality: Shanghai. Type depository: MNHN.

Leontium bicolor Kano, 1930: 44, fig. 2. Type locality: Taiwan. Type depository: National Science Museum of Tokyo. Synonymized by Gressitt, 1951: 208.

Chloridolum (Leontium) lameerei; Yu, Nara & Chu, 2002: 95, pl. 13, figs 7a, 7b.

Specimens examined. – Henan: 2 ♂♂, Xinyang, Xinxian, Liankangshan Nature Reserve, 2014- IV-26/29, leg. Guo-Xi Xue; 1 ♀, same data but 2014-IV-27, leg. Qing Zhai, Meng Li and Guo-Xi Xue. Shaanxi: 1 ♂ (Fig. 24) 1 ♀, Foping, Liangfengya, alt. 2150–1750 m, 1999-VI-28, leg. You-Wei Zhang; 1 ♀, Foping County, Changjiaobaxiang, Shangshawocun, 33.5971°N, 108.0136°E, alt. 1215 m, 2007-V-29, leg. Mei-Ying Lin; 1 ♀, Zhouzhi County, Houzhenzizhen, Laoxianchengcun to Qinlingliang, 33.8001–33.8149°N, 107.7471–107.7435°E, alt. 1745–2021 m, 2007-V-27, leg. Mei-Ying Lin; 1 ♀, Yangxian, Huayangzhen, Yangjiagou, 2014.VI.2–7, leg. Wei-Wei Zhang. Gansu: 1 ♀ (Fig. 25), Kangxian, Qinghelinchang, alt. 1400 m, 1999-VII-7, WenI Chou. Guangxi: 1 ♂ (Fig. 26) 1 ♀, Tianlin, Langpingxiang, alt. 1300 m, 2002-VI-2, leg. Jian-Wen Liu. And 35 specimens from Jiangsu (Nanjing, Chemo, etc), 15 specimens from Zhejiang (Tianmushan, etc).

Picture examined. – Fig. 23 taken from Anhui, Jinzhai by Jin Chen in May 2012, identified by Eduard Vives.

Distribution. – Shandong, Henan, Shaanxi (new Province record), Gansu (new Province record), Jiangsu, Shanghai, Anhui (new Province record), Zhejiang, Hubei, Jiangxi, Hunan, Fujian, Taiwan, Guangxi (new Province record), Yunnan; South Korea.

Remarks. – The genus *Leontium* Thomson, 1864 was treated as a subgenus of *Chloridolum* Thomson, 1864 by Gressitt & Rondon (1970), then all species under it was combined into *Chloridolum*. The specimens from Shaanxi were identified by Eduard Vives in 2012. It was quite strange that the type locality Shanghai was not cited by many authors (Hua, 2002; Löbl & Smetana, 2010). Wu (1937) recorded Jiangsu, Nanjing and Gressitt (1951) cited. But the locality Jiangsu was not included in Hua (2002)'s checklist. Then both were lost in Löbl & Smetana (2010)

Genus *Polyzonus* Dejean, 1835

Type species. – *Saperda fasciata* Fabricius, 1781.

16. *Polyzonus bizonatus* White, 1853 (Fig. 27)

New to Zhejiang

Polyzonus bizonatus White, 1853: 171. Type locality: E. India (Moulmein). Type depository: NHML.

Picture examined. – Fig. 27 taken from Zhejiang, Tianmushan by Bo Peng in August 2010, identified by Eduard Vives.

Distribution. – Zhejiang (new Province record), Guangxi, Yunnan; India, Myanmar, Vietnam, Laos, Thailand.

Tribe Cerambycini Latreille, 1802

Genus *Neoplocaederus* Sama, 1991

Type species. – *Plocaederus cyanipennis* J. Thomson, 1861.

17. *Neoplocaederus obesus* (Gahan, 1890) (Figs 28–29)

New to Jiangxi and Guizhou.

Plocaederus obesus Gahan, 1890: 51. Type locality: N. India, Darjeeling. Type depository: NHML.

Plocaederus pedestris Cotes, 1889: 91, pl. V, fig. 4. [HN].

Specimens examined. – Jiangxi: 1 ♂ (Fig. 29), Liantang, 1957.VIII.10, leg. Lin-Yao Wang. Guizhou: 1 ♀, Ceheng County, 2008.IV, leg. Wei Wei, and many specimens from Guangdong, Hainan and Yunnan.

Picture examined. – Fig. 28 taken from Guizhou, Leigongshan by Ye Liu in May 2008.

Distribution. – Jiangxi (new Province record), Taiwan, Guangdong, Hainan, Hongkong, Guangxi, Guizhou (new Province record), Yunnan; Pakistan, India, Bhutan, Bangladesh, Myanmar, Vietnam, Thailand, Sri Lanka.

Remarks. – *Neoplocaederus* Sama, 1991 was a replace name of *Plocaederus* Thomson, 1861.

Genus *Xoanodera* Pascoe, 1857

Type species. – *Xoanodera trigona* Pascoe, 1857.

18. *Xoanodera maculata* Schwarzer, 1925 (Fig. 30–31)

New to Hainan

Xoanodera maculata Schwarzer, 1925: 21. Type locality: Taiwan, Sokutsu. Type depository: Natur-Museum und Forschungs-Institut Senckenberg, Frankfurt am Main.

Specimens examined. – Zhejiang: 1 ♀, Wenzhou, Taishun County, Wuyanling, alt. 680–1000 m, 2005-VII-28-VIII.4, leg. Mei-Ying Lin. Fujian: 1 ♂, Wuyishan, Sangang, alt. 750 m, 2005-VIII-8, leg. Mei-Ying Lin; 2 ♀♀, Wuyishan, Xianfengling, Liaowangtai, alt. 1200 m, 2005-VIII-9, leg. Mei-Ying Lin by light trap. Taiwan: 1 ♂, Xinzhu County, Wufengxiang, Dalulindao, 1997-VI-9, leg. Chang-Chin Chen. Hainan: 6 ♀♀, Baisha County, Yinggeling, 2011-IV-27/30, leg. Wenhsin Lin; 4 ♂♂, Baisha County, Yinggeling, Gaofeng, Fanglaocun, 18.97410°N, 109.29560°E, alt. 790 m, 2010-IV-13, leg. Mei-Ying Lin by light trap (IOZ(E) 1873981–84); 1 ♂ (Fig. 31), Wuzhishanbaohuqu, Guanliju, 18.90840°N, 109.67359°E, alt. 708 m, 2010-IV-10, leg. Wenhsin Lin by light trap (IOZ(E) 1873980); 1 ♂, same data but 2010-IV-9, leg. Mei-Ying Lin (IOZ(E) 1873979); 1 ♂, Wuzhishan, Shuimanxiang, alt. 740 m, 2007-V-10, leg. Xian Li (IOZ(E) 1867884); 1 ♂, Wuzhishan, Shuiman, alt. 730 m, 2007-V-10, leg. Zong-Yi Zhao by light trap (IOZ(E) 1867883); Qiongzong County, Limushan, Qijiacun, 19.17310°N, 109.71968°E, alt. 657 m, 2010-IV-6, leg. Mei-Ying Lin by light trap (IOZ(E) 1873985); 1 ♀, Qiongzong County, Limushan, alt. 640 m, 2007-V-15, leg. Xian Li (IOZ(E) 1867885); 1 ♀, Qiongzong, Dafenglinchang, 1978-V-12, leg. Bao-Lin Zhang; 1 ♂, Jianfengling, Yulingu, Huxiaolongyin Tingchechang, alt. 707 m, 2009-V-21, leg. Ke-Qing Song (IOZ(E) 1883579); Baiwangling, Dongerlinchang, 19.09901°N, 109.17540°E, alt. 1015 m, 2007-V-9, De-Yan Ge by light trap (IOZ(E) 1883576–77); 1 ♂, same data but 2007-V-8 (IOZ(E) 1883578). Guangxi: 2 ♂♂, Fangcheng, Dongzhongxiang, alt. 550 m, 2000-VI-5, leg. Wen-Zhu Li and Jun Chen; 1 ♀, Fangcheng, Fulong, alt. 500 m, 1999-V-25, leg. De-Cheng Yuan; 2 ♀♀, Fangcheng, Banbaxiang, alt. 550 m, 2000-VI-4, leg. Wen-Zhu Li and Jian Yao; 1 ♂, 1 ♀, Shangsi, Hongqilinchang, alt. 300–350 m, 1999-V-29, leg. Wen-Zhu Li and Xin Ke; 1 ♂, Longsheng, Huaping, 2011-VI-8, leg. Xin-Lei Huang; 1 ♀, Longsheng, alt. 300 m, 1963-VI-21, leg. Chun-Guang Wang; 1 ♀, Miaoershan, alt. 1100 m, 1985-VII-11, leg. Su-Bai Liao. Sichuan: 1 ♂, Emeishan, Qingyinge, alt. 800–1000 m, 1959-IX-18, leg. Ke-Ren Huang; 1 ♀, same data but 1957-VII-16. Yunnan: 1 ♀, Menghai, Nannuoshan, alt. 1200 m, 1957-IV-27, leg. Ling-Chao Zhang; 1 ♀, 30 km SW. of Mangshi, Santaishan, alt. 1200 m, 1955-V-18, leg. Cai-Yun Zhou (IOZ(E) 217673).

Picture examined. – Fig. 30 taken from Hainan, Wuzhishan by Mei-Ying Lin in April 2010.

Distribution. – Zhejiang, Hunan, Fujian, Taiwan, Hainan (new Province record), Guangxi, Sichuan, Yunnan.

Tribe Cleomenini Lacordaire, 1868

Genus *Cleomenes* J. Thomson, 1864

Type species. – *Cleomenes diammaphoroides* J. Thomson, 1864.

19. *Cleomenes longipennis* Gressitt, 1951 (Figs 32–33)

New to Xizang

Cleomenes longipennis Gressitt, 1951: 313, pl. 12, fig. 7. Type locality: Shaanxi, Baoji. Type depository: Department of Entomology, National Chung Hsing University, Taichung; ex collection Chang Shu-tsen.

Cleomenes longipennis longipennis; Holzschuh, 2006: 264.

Specimens examined. – Shaanxi: 1 ♂, Zhouzhi County, Houzhenzizhen, Laoxianchengcun to Qinlingliang, 33.8001–33.8149°N, 107.7471–107.7435°E, alt. 1745–2021 m, 2007-V-27, leg. Mei-Ying Lin; 1 ♂ 6 ♀♀, Zhouzhi County, Houzhenzizhen, Qinlingliang, alt. 2021 m, 33.81491°N, 107.74357°E, 2007-V-27, Mei-Ying Lin, Jun-Zhi Cui & Li-Jie Zhang. Xizang: 1 ♂ (Fig. 33), Xizang, Motuo, 80K, 2012-VIII-3, leg. Gan-Yan Yang at night; 1 ♀, Linzhi, Motuo County, Hanmi to Lage, 2011-VII-26, leg. Ye Liu, and 7 specimens from Hubei, Sichuan and Yunnan.

Picture examined. – Fig. 32 taken from Xizang by Zhao-Hui Pan in August 2013.

Distribution. – Shaanxi, Hubei, Taiwan, Sichuan, Yunnan, Xizang (new Province record).

Tribe Sestyrini Pascoe, 1869

Genus *Dere* A. White, 1855

Type species. – *Dere thoracica* A. White, 1855.

20. *Dere reticulata* Gressitt, 1942 (Fig. 34)

New to Beijing.

Dere reticulata Gressitt, 1942a: 4, fig. 3. Type locality: Tibet. Type depository: American Museum of Natural History, New York.

Specimens examined. – Many specimens from Sichuan, Yunnan and Xizang.

Picture examined. – Fig. 34 taken from Beijing by Chao Wu in July 2011.

Distribution. – Beijing (new record), Henan, Shaanxi, Zhejiang, Hubei, Sichuan, Yunnan, Xizang; Laos.

Tribe Clytini Mulsant, 1839

Genus *Chlorophorus* Chevrolat, 1863

Type species. – *Callidium annulare* Fabricius, 1787.

21. *Chlorophorus caragana* Xie & Wang, 2012 (Fig. 35)

New to Inner Mongolia.

Chlorophorus caragana Xie & Wang, 2012, *In: Zong et. al*, 2012: 55, figs 1–2, 5–7. Type locality: Ningxia Hui Autonomous region, Lingwu, Dongshanpo. Type locality: Entomological Museum of Yangtze University, Jingzhou, P. R. China.

Specimens examined. – Inner Mongolia: 1 ♂, 1 ♀, Erlian, 1970-VII-25/26; 2 ♀♀ (Fig. 35), Hanwula, 2011-VII-28, leg. Shu-Xiang Hao, host: *Symplocos* sp.

Distribution. – Inner Mongolia (new record), Ningxia.



28–29. *Neoplocaederus obesus* (Gahan, 1890): 28, taken from Guizhou, Leigongshan by Ye Liu in May 2008; 29, ♂ from Jiangxi. 30–31. *Xoanodera maculata* Schwarzer, 1925: 30, taken from Hainan, Wuzhishan by Mei-Ying Lin in April 2010; 31, ♂ from Hainan. 32–33. *Cleomenes longipennis* Gressitt, 1951: 32, taken from Xizang by Zhao-Hui Pan in August 2013; 33, ♂ from Tibet. 34. *Dere reticulata* Gressitt, 1942, taken from Beijing by Chao Wu in July 2011. 35. *Chlorophorus caragana* Xie & Wang, 2012, ♂ from Inner Mongolia. 36. *Sclethrus stenocylindrus* Fairmaire, 1895, taken from Chongqing, Simianshan by Hanfeng in June 2013. 37–38. *Xylotrechus chinensis* (Chevrolat, 1852): 37, taken from Xizang, Chayu by Ye Liu in July 2011; 38, ♀, from Hongkong. 39. *Xylotrechus incurvatus* Chevrolat, 1863, taken from Xizang, 62K by Chao Wu in August 2013.

Genus *Sclethrus* Newman, 1842

Type species. – *Ibidion amoenum* Gory, 1833.

22. *Sclethrus stenocylindrus* Fairmaire, 1895 (Fig. 36)

New to Chongqing.

Sclethrus stenocylindrus Fairmaire, 1895: 184. Type locality: Vietnam, Tonkin, Lang-Song. Type depository: MNHN.

Picture examined. – Fig. 36 taken from Chongqing, Simianshan by Hanfeng in June 2013.

Distribution. – Guangdong, Hainan, Guangxi, Chongqing (new record), Yunnan; Myanmar, Vietnam, Laos, Thailand.

Remarks. – The distribution of Guangdong and Hunan provinces were not included in Han & Niisato (2009). However, it is very possible to distribute in this two provinces. So we don't delete them from the list.

Genus *Xylotrechus* Chevrolat, 1860

Type species. – *Clytus sartorii* Chevrolat, 1860.

23. *Xylotrechus chinensis* (Chevrolat, 1852) (Figs 37–38)

New to Hongkong and Xizang.

Clytus chinensis Chevrolat, 1852: 416. Type locality: N. China (Shanghai). Type depository: NHML.

Xylotrechus chinensis: Bates, 1884: 231.

Xylotrechus chinensis var. *laterufescens* Pic, 1913: 19. Type locality: Taiwan (Formosa). Type depository: MNHN.

Xylotrechus sekii Matsushita, 1936: 146. Type locality: Taiwan (Formosa, Kuraru). Type depository: Entomological Museum, Hokkaido University, Sapporo.

Xylotrechus chinensis v. *griseofasciatus* Pic, 1943: 1. Type locality: China (Chine). Type depository: MNHN.

Specimens examined. – Beijing: 18 specimens. Hongkong: 1 ♀ (Fig. 38), Hongkong. Yunnan: 2 specimens. And 6 from Jiangsu, 1 from Shanghai, 1 from Shandong, 1 from Shaanxi.

Picture examined. – Fig. 37 taken from Xizang, Chayu by Ye Liu in July 2011.

Distribution. – Liaoning, Beijing, Hebei, Shaanxi, Shanxi, Shandong, Henan, Gansu, Jiangsu, Shanghai, Anhui, Zhejiang, Hubei, Jiangxi, Fujian, Taiwan, Guangdong, Hongkong (new record), Guangxi, Sichuan, Yunnan, Xizang (new record); North Korea, South Korea.

Remarks. – The populations in Japan were separated into two subspecies: *X. (X.) chinensis kobayashii* Fujita, 2010 and *X. (X.) chinensis kurosawai* Fujita, 2010.

24. *Xylotrechus incurvatus* Chevrolat, 1863 (Fig. 39)

New to Xizang.

Amauraesthes incurvatus Chevrolat, 1863: 331. Type locality: Hongkong. Type depository: NHML.

Xylotrechus incurvatus: Gahan, 1906: 248.

Specimens examined. – Xizang: 1 ♂, Motuo, Gedang, alt. 2000 m, 1982-X-14, leg. Yin-Heng Han.

Picture examined. – Fig. 39 taken from Xizang, 62K by Chao Wu in August 2013.

Distribution. – Hebei, Gansu, Hunan, Fujian, Taiwan, Guangdong, Hongkong, Sichuan, Yunnan, Xizang (new record); South Korea, India, Bhutan, Nepal, Bangladesh, Myanmar.

Tribe Molorchini Gistel, 1848

Genus *Molorchus* Fabricius, 1793

Type species. – *Necydalis umbellatarum* Schreber, 1759.

25. *Molorchus minor* (Linnaeus, 1758) (Fig. 40–41)

New to Beijing.

Necydalis minor Linnaeus, 1758: 421. Type locality: Europe. Type depository: Collection of Linnaeus, now should be in London.

Necydalis ceramboides DeGeer, 1775: 151. Type localilty: Suede. Type depository: Naturhistoriska Riksmuseet, Stockholm.

Leptura dimidiatus Fabricius, 1775: 199. Type locality: Europe. Type depository: Zoologisk Museum, Copenhagen.

Molorchus dimidiatus: Fabricius, 1801: 375.

Gymnopterion medius Schrank, 1798: 688. Type locality: Germany: Gern, Eggenfelden, Regensburg. Type depository: Naturhistorisches Museum Wien.

Molorchus rufescens Kiesenwetter, 1879: 316. Type locality: Georgia, Borshom. Type depository: Staatliches Museum für Tierkunde, Dresden.

Heliomanes minor: White, 1855: 180.

Molorchus minor: Martin, 1860: 1007.

Specimens examined. – Heilongjiang: 1 ♂, Dailing, Liangshuigou, 1957-V-19, leg. Zhong He; 2 ♀♀, Dailing, 1956-VI-26. Liaoning: 5 ♀♀, Gaolingzi, 1939-VI-7/VII-2. Beijing: 1 ♀ (Fig. 41), Yanqing County, Songshan Nature Reserve, Chinese pine forest, alt. 765 m, 2014-V-31, leg. Fu-Jing Zhang (BFU). Russia: 1 ♂ 1 ♀, Mockba, 1958–1960.

Picture examined. – Fig. 40 taken from Beijing by Chao Wu in July 2011.

Distribution. – Heilongjiang, Liaoning, Beijing (new record), Shaanxi, Gansu, Qinghai, Xinjiang; Russia, Mongolia, North Korea, South Korea, Kazakhstan, Turkey; Europe.



40–41. *Molorchus minor* (Linnaeus, 1758): 40, taken from Beijing by Chao Wu in July 2011; 41, ♀ from Beijing. 42. *Oplatocera* (*Epioplatocera*) *mandibulata* Miwa & Mitono, 1935, taken from Chongqing, Simianshan by Wei-Wei Zhang in September 2008. 43. *Oplatocera* (*Epioplatocera*) *mitonoi* Hayashi, 1981, taken from Zhejiang, Tianmushan by Bo Peng in August 2010. 44–45. *Erythresthes bowringii* (Pascoe, 1863): 44, ♀ from Anhui; 45, ♂, from Hubei.

Tribe Oemini Lacordaire, 1868

Genus *Oplatocera* A. White, 1853

Type species. – *Oplatocera callidioides* A. White, 1853.

26. *Oplatocera* (*Epioplatocera*) *mandibulata* Miwa & Mitono, 1935 (Fig. 42)

New to Chongqing.

Oplatocera mandibulata Miwa & Mitono, 1935: 404. Type locality: Taiwan.

Specimens examined. – Taiwan: 1 ♂, Taoyuan County, Fuxingxiang, Xicun, alt. 850 m, 1994-VIII-6, leg. Yu-Chi Zeng. Chongqing: 1 ♂, Jiangjin, Mt. Simianshan, 2007-VIII-17/19, leg. Wei-Wei Zhang.

Picture examined. – Fig. 42 taken from Chongqing, Simianshan by Wei-Wei Zhang in September 2008.

Distribution. – Taiwan, Chongqing (new record).

27. *Oplatocera (Epioplatocera) mitonoi* Hayashi, 1981 (Fig. 43)

New to Zhejiang.

Oplatocera mitonoi Hayashi, 1981: 30. Type locality: Taiwan, Yangmingshan. Type depository: Osaka Museum of Natural History.

Specimens examined. – Zhejiang: 2 ♀♀, Lin'an, Qingliangfeng, Qianqingtang, alt. 1100 m, 2008-VIII-6/7, leg. Wen-Xuan Bi (Collection of Wen-Xuan Bi in Shanghai).

Picture examined. – Fig. 43 taken from Zhejiang, Tianmushan by Bo Peng in August 2010.

Distribution. – Zhejiang (new Province record), Taiwan.

Tribe Pseudolepturini J. Thomson, 1861

Genus *Erythresthes* J. Thomson, 1864

Type species. – *Erythrus bowringii* Pascoe, 1863.

28. *Erythresthes bowringii* (Pascoe, 1863) (Figs 44–45)

New to Anhui and Hubei.

Erythrus bowringii Pascoe, 1863: 52. Type locality: Hongkong. Type depository: NHML.

Erythresthes bowringii: Thomson, 1864: 159.

Specimens examined. – Anhui: 1 ♀ (Fig. 44), Yuexi County, 1984, leg. Fang-Bei Yu, host: *Castanea mollissima*. Zhejiang: 1 ♂, 1982-III, leg. Xian-Kai Zhang, host: *Castanea mollissima*. Hubei: 1 ♂ (Fig. 45), Luotian, 2013-IV-24, leg. Yun-Li Xiao and Yu-Ping Wang. Hunan: 3 ♂♂ 1 ♀, Yueyang, Xinqiang, 1982-III-16/10, IV-19, leg. Bing-Tang Li.

Distribution. – Anhui (new Province record), Zhejiang, Hubei (new Province record), Jiangxi, Hunnan, Guangdong, Hongkong, Guangxi.

Subfamily Lamiinae Latreille, 1825

Tribe Acanthocinini Blanchard, 1845

Genus *Neacanista* Gressitt, 1940

Type species. – *Neacanista tuberculipennis* Gressitt, 1940.

29. *Neacanista tuberculipenne* Gressitt, 1940 (Figs 46–47)

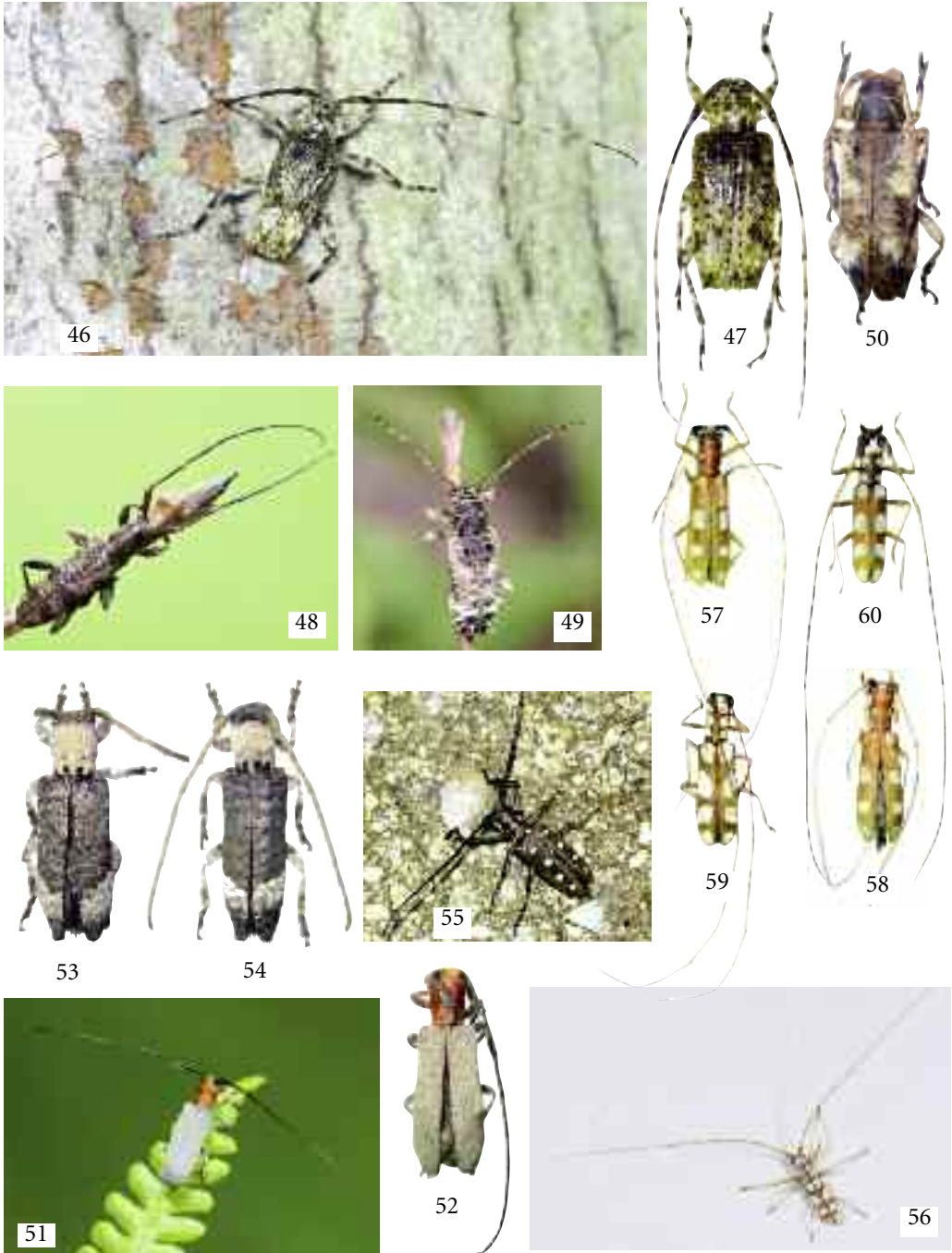
New to Chongqing and Yunnan.

Neacanista tuberculipenne Gressitt, 1940a: 182, pl. 7, fig. 7. Type locality: Hainan. Type depository: SYSU.

Specimens examined. – HOLOTYPE ♀, Hainan Is. Tai-tsing-lam-ts'uen, back of Lai-mo-ling (Mt. Range), Ting-an Dist., 1935-VI-13/16, leg. F.K. To (SYSU). 1 ♀ (Fig. 47), Yunnan, Ruili, Nongdao, Dengga, 2012-X-25, leg. Xin-Lei Huang (IOZ(E)1896976).

Picture examined. – Fig. 46, taken from Chongqing, Simianshan by Feng Han.

Distribution. – Hainan, Chongqing (new record), Yunnan (new Province record).



46–47. *Neacanista tuberculipenne* Gressitt, 1940. 46, taken from Chongqing, Simianshan by Feng Han; 47. ♀ from Yunnan. 48. *Rondibilis horiensis hongshana* Gressitt, 1937, taken from Guangdong, Nanling by Bo Lei in May 2011. 49–50. *Callomecyna superba* Tippmann, 1955: 49, taken from Chongqing, Simianshan by Feng Han in September 2008; 50. ♂ from Hunan. 51–52. *Eunidia atripennis* Pu & Yang, 1992: 51, taken from Chongqing, Simianshan by Yuan-Sheng Li in July, 2013. 52. ♀ from Hubei. 53–54. *Xylariopsis mimica* Bates, 1884: 53, ♀ from Beijing; 54. ♀ from Shaanxi. 55. *Batocera calana* (Parry, 1844), taken from Xizang, Motuo by Chao Wu in 2013. 56–60. *Olenecamptus octopustulatus* (Motschulsky, 1860): 56, taken from Anhui, Jinzhai by Jin Chen in June, 2011; 57, ♀ from Heilongjiang; 58. ♀ from Jilin; 59. ♀ from Gansu; 60. ♂, from Guangxi.

Genus *Rondibilis* J. Thomson, 1857

Type species. – *Rondibilis bispinosa* J. Thomson, 1857.

30. *Rondibilis horiensis hongshanus* Gressitt, 1937 (Fig. 48)

New to Guangdong

Rondibilis horiensis hongshanus Gressitt, 1937b: 614. Type locality: Jiangxi, Hongshan. Type depository: USNM.

Picture examined. – Fig. 48, taken from Guangdong, Nanling by Bo Lei in May 2011.

Specimens examined. – Zhejiang: 1 ♂, T'ienmushan, 1936.VII.10; 1 female, T'enmushan, 1936-VII-24, leg. O. Piel.

Distribution. – Zhejiang, Hubei, Jiangxi, Guangdong (new Province record).

Tribe Apomecynini J. Thomson, 1860

Genus *Callomecyna* Tippmann, 1860

Type species. – *Callomecyna superba* Tippmann, 1955.

31. *Callomecyna superba* Tippmann, 1955 (Figs 49–50)

New to Chongqing and Hunan.

Callomecyna superba Tippmann, 1955: 126, Abb. 19. Type locality: Fujian, Guadun (=Kuatun). Type depository: NMB.

Mimoxenoleoides fasciculosa Breuning, 1963: 83. Type locality: Guangdong. Type depository: NMB. Synonymized by Breuning, 1965: 30.

Specimens examined. – Hunan: 1 ♂ (Fig. 50), Guidong County, Siduxiang, Xinlongcun alt. 770–1500 m, 2008-VII-12, leg. Gan-Yan Yang by beating (IOZ(E) 1896985). Fujian: 1 ♂ 1 ♀, Chong'an, Tongmuguan, Guanping, alt. 900 m, 1960-VIII-13, leg. Fu-Ji Pu. Guangxi: 1 ♂, Longsheng, Baiyan, alt. 1150 m, 1963-VI-19, leg. Chun-Guang Wang; 1 ♀, Miaoershan, Jiuniutang, alt. 1100 m, 1985-VII-10, leg. Su-Bai Liao by light trap.

Picture examined. – Fig. 49, taken from Chongqing, Simianshan by Feng Han in September 2008.

Distribution. – Hunan (new Province record), Fujian, Guangdong, Guangxi, Chongqing (new record), Guizhou.

Genus *Eunidia* Erichson, 1843

Type species. – *Eunidia nebulosa* Erichson, 1843.

32. *Eunidia atripennis* Pu & Yang, 1992 (Figs 51–52)

New to Hubei, Chongqing and Yunnan.

Eunidia atripennis Pu & Yang, 1992: 301, 305, figs 1a–b.

Specimens examined. – Hubei: 1 ♀ (Fig. 52), Xingshan, Longmenhe, alt. 1350 m, 1993-VII-18, leg. Xiao-Lin Chen by light trap (IOZ(E) 1896986), identified by Fu-Ji Pu in 1994. Guizhou: HOLOTYPE ♀, Leishan, Taojiang, alt. 950 m, 1988-VII-7, leg. Shu-Yong Wang (IOZ(E) 217960). Yunnan: 1 ♀, S. Mengla, 21°24.294'N, 101°37.822'E, alt. 669 m, 2011-VI-3, leg. Xiao-Dong Yang (CCCC).

Picture examined. – Fig. 51, taken from Chongqing, Simianshan by Yuan-Sheng Li in July, 2013.

Distribution. – Hubei (new Province record), Chongqing (new record), Guizhou, Yunnan (new Province record).

Genus *Xylariopsis* Bates, 1884

Type species. – *Xylariopsis mimica* Bates, 1884.

33. *Xylariopsis mimica* Bates, 1884 (Fig. 53–54)

New to Beijing and Gangsu.

Xylariopsis mimica Bates, 1884: 247, pl. II. fig. 7. Type locality: Japan, Honshu. Type depository: NMHN.

Specimens examined. – Beijing: 1 ♂, 2 ♀♀ (Fig. 53), Songshan, 2011-VI-10/13 (BFU). Gansu: 1 ♂, Zhengning, Zhongwan, 1979-VII-21/30, leg. Xiao-Hua Wang. Shaanxi: 1 ♀, Ningshan, Huoditang, alt. 1580 m, 1998-VIII-20, leg. De-Cheng Yuan; 1 ♀ (Fig. 54), same data but 1998-VIII-22 (IZAS, IOZ(E) 1904718); 1 ♀, same data but 1998-VIII-21; 1 ♀, Ningshan, Huoditang, alt. 1580–1650 m, 1999-VI-26, leg. De-Cheng Yuan. Shanghai: 1 ♀, Zo-Se, 1924-X-16. Gansu: 1 ♂, Zhengning, Zhongwan, 1979-VII-21/30, leg. Xia-Hua Wang.

Distribution. – NE China, Beijing (new record), Shaanxi, Gansu (new Province record), Jiangsu, Shanghai; Russia, North Korea, South Korea, Japan.

Remarks. – The localities Shaanxi was recorded in Jiang *et al.* (1985) but did not cited by non-Chinese authors.

Tribe Batocerini J. Thomson, 1864

Genus *Batocera* Dejean, 1835

Type species. – *Cerambyx rubus* Linnaeus, 1758.

34. *Batocera calana* (Parry, 1844) (Fig. 55)

New to Xizang

Lamia calana Parry, 1844: 454. Type locality: Bangladesh, Sylhet. Type depository: Hope Department of Entomology, Oxford University Museum of Natural History; ex collection F.W. Hope.

Lamia parryi Hope, 1845: 77. Type locality: Bangladesh, Sylhet. Type depository: Hope Department of Entomology, Oxford University Museum of Natural History; ex collection F.W. Hope.

Lamia Batocera calanus Parry, 1845: 86. Type locality: India, Khasi Hills. Type depository: NHML.

Megacriodes guttatus Vollenhoven, 1871: 110, pl. 5, figs 10 & 10a. Type locality: Indonesia, Sumatra. Type depository: Rijksmuseum van Natuurlijke Historie, Leiden; ex collection Snellen van Vollenhoven.

Batocera Fabricii Thomson, 1878: 54. (new name for *Megacriodes guttatus* Vollenhoven, 1871).

Batocera albofasciata Heyne & Taschenberg, 1908, (*nec* Degger, 1775): 242. Type locality: Indonesia, Sumatra. Type depository: Rijksmuseum van Natuurlijke Historie, Leiden; ex collection Snellen van Vollenhoven.

Batocera calanus var. *bimaculata* Schwarzer, 1914: 280. Type locality: Indonesia, Sumatra. Type depository: Rijksmuseum van Natuurlijke Historie, Leiden; ex collection Snellen van Vollenhoven.

Batocera calanus var. *immaculata* Schwarzer, 1914: 280. Type locality: Indonesia, Sumatra. Type depository: Rijksmuseum van Natuurlijke Historie, Leiden; ex collection Snellen van Vollenhoven.

Batocera (Semibatocera) parryi narada Kriesche, 1928: 45. Type locality: Vietnam, Tonkin. Type depository: Museum für Naturkunde der Humboldt-Universität zu Berlin; ex collection Moser.

Specimens examined. – Hainan: 1 ♀, Wuzhishan, alt. 800m, 1997-V-30, *leg.* Wen-Zhu Li; 1 ♀, Jianfengling, 1964-V-13, *leg.* Tai-Lu Chen. Yunnan: 1 ♂, Longling, alt. 1600 m, 1955-V-19, *leg.* Zi-Feng Xue; 1 ♂, Cheli, Mengjie, alt. 620 m, 1957-IV-22, *leg.* Ling-Chao Zang; 1 ♂, Baoshan to Yongping, 1955-V-28, *leg.* B. Popov. Xizang: 1 ♀, Linzhi, Motuo, Aniqiao to Mani, alt. 890–1080m, 2006-VIII-14, *leg.* Ming Bai (IOZ(E) 1896990).

Picture examined. – Fig. 55, taken from Xizang, Motuo = Medog by Chao Wu in 2013.

Distribution. – Fujian, Taiwan, Hainan, Yunnan, Xizang (new record); India, Bangladesh, Myanmar, Vietnam, Malaysia, Indonesia.

Tribe Dorcaschematini J. Thomson, 1860

Genus *Olenecamptus* Chevrolat, 1835

Type species. – *Olenecamptus serratus* Chevrolat, 1835 (= *Saperda biloba* Fabricius, 1801).

35. *Olenecamptus octopustulatus* (Motschulsky, 1860) (Fig. 56–60)

New to Heilongjiang, Jilin, Gansu, Anhui, Guangxi.

Ibidimorphum octopustulatum Motschulsky, 1860: 152, pl. X, fig. 3. Type locality: Russia, Siberia. Type depository: Zoological Museum, University of Moscow.

Olenecamptus octopustulatus chinensis Dillon & Dillon, 1948: 204. Type locality: Shanghai. Type depository: Field Museum of Natural History, Chicago.

Olenecamptus octopustulatus v. *choseni* Gilmour, 1956: 754. Type locality: Korea. Type depository: NHML.

Olenecamptus mordkovitshi Tshernyshev & Dubatov, 2000: 386, figs 1–4. Type locality: Russia, East Siberia. Type depository: Siberian Zoological Museum, Institute of Animal Systematic and Ecology of Animals, Novosibirsk.

Specimens examined. – Heilongjiang: 1 ♀ (Fig. 57), Ercengdianzi, 1941-VI-22; 1 ♀, Shanhetun, 1970-VII-11, N°18. Jilin: 1 ♀ (Fig. 58), Jiuzhan, 1957. Henan: 1 ♀, Xinyang, Xinxian, Liankangshan Nature Reserve, 2014-VI-16/17, *leg.* Qing Zhai, Ai-Li Lin, Liang Zhang and Kai-Jie Xizao. Shaanxi: 1 ♀, Foping, Liangfengya, alt. 2150-1750 m, 1999-VI-28, *leg.* Jian Yao; 1 ♂, Ningshan, Huoditang, alt. 1580 m, 1998-VII-26, *leg.* Jian Yao; 1 ♀, same data but 1998-VII-22, *leg.* De-Cheng Yuan; 1 male, Qinling shanliang & Beipo alt. 2050 m, 1998-VII-30, *leg.* Jian Yao; 1 ♀, Foping County, alt. 848 m, 2007-VIII-16, *leg.* Yu-Xia Yang. Gansu: 1 ♀ (Fig. 59), Wenxian, Bikou, Bifenggou, alt. 900-1450 m, 1998-VI-25, *leg.* Shu-Yong Wang; 2 ♂♂, Wenxian, Bikou, Zhongmiao, alt. 700 m, 1998-VI-24, *leg.* Jian Yao by light trap; 1 ♀ same data but *leg.* De-Cheng Yuan. Anhui: 1 ♂, Ancheng, 1982-V-23. Fujian: 1 ♂, Nanping, Wuyishan, Sangang, Guadun, 2009-VII-8, Xiu-Shuai Yang. Guangxi: 1 ♂ (Fig. 60), Longsheng, Huaping, 2011-VI-8, *leg.* Xin-Lei Huang; 1 ♀, Longsheng, 1980-V-15; 1 ♂ 1 ♀, Longsheng, Maoershan, 2011-VI-2/3, *leg.* Xin-Lei Huang, and many specimens from Fujian, Shanghai, Hubei, Jiangxi, Zhejiang, Henan, Liaoning.

Picture examined. – Fig. 56, taken from Anhui, Jinzhai by Jin Chen in June, 2011.

Distribution. – Heilongjiang (new Province record), Jilin (new Province record), Liaoning, Inner Mongolia, Henan, Shaanxi, Ningxia, Gansu (new Province record), Jiangsu, Shanghai, Anhui (new Province record), Zhejiang, Hubei, Jiangxi, Hunan, Fujian, Taiwan, Guangdong, Hainan, Guangxi (new Province record), Sichuan, Guizhou; Russia, Mongolia, North Korea, South Korea, Japan.

Tribe Mesosini Mulsant, 1839

Genus *Agelasta* Newman, 1842

Type species. – *Agelasta transversa* Newman, 1842.

36. *Agelasta (Pseudagelasta) bifasciana* White, 1858 (Fig. 61)

New to Xizang

Agelasta bifasciana White, 1858: 273. Type locality: Bangladesh, Silhet. Type depository: NHML.

Specimens examined. – Xizang: 1 ♀, Tibet, Linzhi, Chayu, Xiachayu, Gaduigameicun, 2011-VII-8, *leg.* Ye Liu (IZAS).

Picture examined. – Fig. 61, taken from Xizang, Linzhi, Chayu by Jian-Qing Zhu in August, 2010, identified by Junsuke Yamasako.

Distribution. – Jiangxi, Yunnan, Xizang (new Province record); India, Nepal, Bangladesh, Vietnam, Laos.

Genus *Mesosa* Latreille, 1829

Type species. – *Cerambyx curculionoides* Linnaeus, 1760.

37. *Mesosa (Aphelocnemis) latifasciata* (White, 1858) (Figs 62–63)

New to Guangdong, Guangxi

Cacia latifasciata White, 1858: 401. Type locality: Shanghai. Type depository: NHML.

Mesosa luteopubens Pic, 1917: 7. Type locality: Vietnam, Tonkin. Type depository: MNHN.

Mesosa latifasciata: Matsushita, 1931: 44.

Specimens examined. – China: Jiangxi: 1 ♀, Jishui, Wujiang, Luokeng Linchang, 1980-VI-9, leg. JiII-2 (IZAS). Fujian: 1 ♀, Chong'an, Xingcun, Sangang, alt. 740–900 m, 1960-VII-6, leg. Yi-Ran Zhang (IZAS). Guangdong: 1 ♀ (Fig. 62), Nanling Nat. Rev., 2009-V-8 (IZAS). Guangxi: 1 ♂, 1 ♀, Longsheng, Baiyan, alt. 1150 m, 1963-VI-20, leg. Shu-Yong Wang (IZAS); 1 ♀, Longsheng, Tianpingshan, alt. 740 m, 1963-VI-5, leg. Yong-Shan Shi; 1 ♂, Jinxiu, Shengtangshan, alt. 900–1900 m, 2000-VI-28, leg. Wen-Zhu Li; 1 ♂, Jinxiu, Laoshan, 1981-IX-6, leg. Qi-Jing You; 1 ♀ (Fig. 63), Jinxiu, Linhaishanzhuang, alt. 1000 m, 2000-VII-2, leg. Wen-Zhu Li; 1 ♂, Miaoershan, 1979-VI-26, leg. Qi-Jing You.

Distribution. – China: Jiangsu, Shanghai, Jiangxi, Fujian, Taiwan, Guangdong (new Province record), Guangxi (new Province record); Vietnam.

38. *Mesosa (Perimesosa) atrostigma* Gressitt, 1942 (Fig. 64)

New to Anhui.

Mesosa atrostigma Gressitt, 1942b: 84, pl. I, fig. 4. Type locality: Zhejiang, Hangzhou. Type depository: IZAS.

Mesosa (Perimesosa) atrostigma; Gressitt, 1951: 420.

Specimens examined. – HOLOTYPE ♀, Zhejiang, Hangchow (=Hangzhou), 1934-VI-6, leg. Shanghai Science Institute 6 (IZAS, IOZ(E) 217606).

Picture examined. – Fig. 64, taken from Anhui, Jinzhai by Jin Chen in July, 2011, identified by Junsuke Yamasako.

Distribution. – Anhui (new Province record), Zhejiang, Fujian, Taiwan, Guangxi.

39. *Mesosa (Perimesosa) irrorata* Gressitt, 1939 (Figs 65–67)

New to Shaanxi, Hunan, Sichuan.

Mesosa irrorata Gressitt, 1939a: 111, pl. I, fig. 6. Type locality: Zhejiang, Tianmushan. Type depository: IZAS.

Mesosa (Perimesosa) irrorata; Gressitt, 1951: 420.

Specimens examined. – Shannxi: 1 ♀ (Fig. 66), Zhouzhixian, Jixianzhen, Lixincun, 2006-VII-18, leg. Mei-Ying Lin; 1 ♀, Ningshan, Huoditang, alt. 1550 m, 2008-VII-9, leg. Ming Bai. Zhejiang: HOLOTYPE ♀, Zhejiang, T'ien-mu Shan, 1936-VII-22, leg. Père Octave Piel (IZAS, IOZ(E) 217607); 2 ♂♂, Tienmushan, 1937-VII-23, 27; 1 ♀, E. Tienmushan, 1936, VIII, 20; 1 ♀, Tianushan, 1937-VIII-8; 1 ♀, Tianmushan, 1947-II-9. Jiangxi: 1 ♀, Lushan Zhiwuyuan (botany garden), 1975-VII-12; 1 ♂, same data but 1981-VII-27; 1 ♂, Ku-ling, 1934-VIII-9; 1 ♀, Ku-ling. Hunan: 1 ♀ (Fig. 67), Hengshan, 1980. Fujian: 1 ♂, Chong'an, Xingcun, Sangang, alt. 740–800 m, 1960-VII-25, leg. Sheng-Qiao Jiang (IZAS); 1 ♀, Jianyang, Huangheng, Dazhulan, alt. 900–1170 m, 1960-VII-5; leg. Fu-Ji Pu. Sichuan: 1 ♂, Qingchuan, Tangjiahe, 1980-VII-30, leg. Ming-Li Lan. Guizhou: 1 ♂, Shiqian, Jinxing, alt. 900 m, 1988-VII-25, leg. Shu-Yong Wang; 1 ♀, Shiqian, Jinxing, alt. 650 m, 1988-VII-23, leg. Hong Liu; 1 ♀, Jiangkou, Fanjingshan, alt 550–850 m, 1988-VII-18, leg. Shu-Yong Wang.

Picture examined. – Fig. 65, taken from Sichuan, Huayingshan by Chun-Guo Zhou in August, 2007, identified by Junsuke Yamasako.

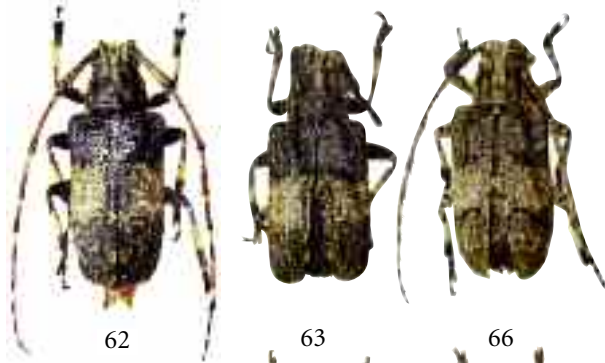
Distribution. – Henan, Shaanxi (new Province record), Zhejiang, Hubei, Jiangxi, Hunan (new Province record), Fujian, Sichuan (new Province record).



61



64



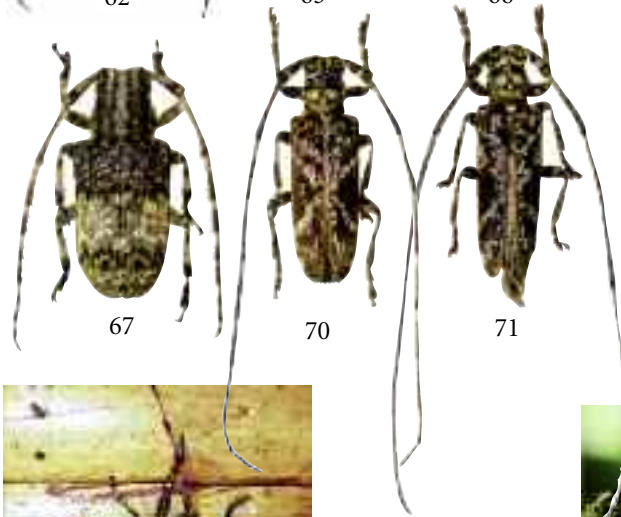
62

63

66



65



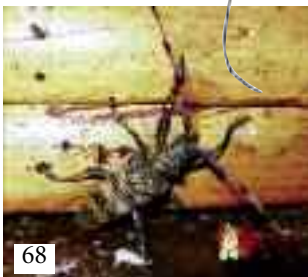
67

70

71



69



68



72

61. *Agelasta (Pseudagelasta) bifasciana* White, 1858, taken from Xizang, Linzhi, Chayu by Jian-Qing Zhu in August, 2010. 62–63. *Mesosa (Aphelocnemia) latifasciata* (White, 1858): 62, ♀ from Guangdong; 63, ♀ from Guangxi. 64. *Mesosa (Perimesosa) atrostigma* Gressitt, 1942, taken from Anhui, Jinzhai by Jin Chen in July, 2011. 65–67. *Mesosa (Perimesosa) irrorata* Gressitt, 1939: 65, taken from Sichuan, Huayingshan by Chun-Guo Zhou in August, 2007; 66, ♀ from Shaanxi; 67, ♀, from Hunan. 68. *Acalolepta ningshanensis* Danilevsky, 2013, taken from Guizhou, Mt. Doupengshan by Ye Liu in July, 2008. 69–71. *Annamanum sinicum* Gressitt, 1951: 69, taken from Yunnan, Hekou by Yi Fan in April, 2010; 70, ♂ from Zhejiang; 71, ♀ from Jiangxi. 72. *Macrochenus guerinii* (White, 1858), taken from Xizang, Motuo by Chao Wu in 2012.

Tribe Monochamini Gistel, 1848

Genus *Acalolepta* Pascoe, 1858

Type species. – *Acalolepta pusio* Pascoe, 1858.

40. *Acalolepta ningshanensis* Danilevsky, 2013 (Fig. 68)

Guizhou as locality confirmed.

Acalolepta ningshanensis Danilevsky, 2013b: 34, figs 14–18. Type locality: Shaanxi. Type depository: IZAS.

Specimens examined. – Shaanxi: HOLOTYPE ♂, Ningshan, Huoditang, 1980-IX-1, *leg.* Zhong-Ming Hu (IOZ(E) 1905126); 1 PARATYPE ♀, Ningshan, Huoditang, alt. 1550 m, 2008-VI-8, *leg.* Wen-Zhu Li by light trap (IOZ(E) 1905127). Hubei: 1 PARATYPE ♀, Shennongjia, Sangluo, alt. 920 m, 1981-IX-1, *leg.* Yin-Heng Han by light trap (IOZ(E) 1905124). Sichuan: 1 PARATYPE ♂, Chongzhou, Chongqing, 1981-VIII-26, *leg.* Xiang-Yun Huang (IOZ(E) 1905128); 1 PARATYPE ♀, Guanxian, Lianghe, 1980-VII-26, *leg.* Ran-Ju Luo (IOZ(E) 1905129). Guizhou: 1 ♂, Duyun, Mt. Doupengshan, 2008-VII-5, *leg.* Ye Liu. Yunnan: 1 PARATYPE ♂, Chenggong, 1975-III-28 (IOZ(E) 1905123).

Picture examined. – Fig. 68 taken from Guizhou, Mt. Doupengshan by Ye Liu in July, 2008.

Distribution. – Shaanxi, Hubei, Sichuan, Guizhou (Province record confirmed), Yunnan.

Remarks. – Danilevsky (2013) proposed that the Guizhou record should be this recently described species, and here we confirm the province record based on both specimens and picture. The information of paratypes 1905128 and 1905129 had some errors in the original paper.

Genus *Annamanum* Pic, 1925

Type species. – *Annamanum vitalisi* Pic, 1925.

41. *Annamanum sinicum* Gressitt, 1951 (Figs 69–71)

New to Zhejiang, Jiangxi and Yunnan.

Annamanum thoracicum sinicum Gressitt, 1951: 387, pl. 16, fig. 10. Type locality: Fujian, Guadun. Type depository: Zoologisches Forschungsmuseum Alexander Koenig, Bonn.

Annamanum sinicum; Breuning, 1956: 233.

Specimens examined. – Zhejiang: 1 ♂ (Fig. 70), Wenzhou, Taishun County, Wuyanling, alt. 680–1000 m, 2005-VII-28/VIII-4, *leg.* Mei-Ying Lin. Jiangxi: 1 ♀ (Fig. 71), Wan'an County, Ludian, Liushukeng, 1980-V-19, *leg.* Ji-I-2, host plant: *Phyllostachys heterocycla* (IZAS, IOZ(E) 1896987).

Picture examined. – Fig. 69, taken from Yunnan, Hekou by Yi Fan in April, 2010.

Distribution. – Zhejiang (new Province record), Jiangxi (new Province record), Fujian, Sichuan, Yunnan (new Province record).

Genus *Macrochenus* Guérin-Méneville, 1843

Type species. – *Cerambyx tigrinus* Olivier, 1797.

42. *Macrochenus guerinii* (White, 1858) (Fig. 72)

New to Xizang.

Pelargoderus Guerinii White, 1858: 274. Type locality: Bangladesh, Sylhet. Type depository: NHML.

Macrochenus isabellinus Aurivillius, 1920: 372. Type locality: Vietnam, Tonkin. Type depository: Naturhistoriska Riksmuseet, Stockholm.

Specimens examined. – Xizang: 1 ♀, Motuo, Xirang, alt. 750 m, 1998-XI-7, leg. Jian Yao (IOZ(E)1896992), and many specimens from Yunnan and Guangxi.

Picture examined. – Fig. 72, taken from Xizang, Motuo by Chao Wu in 2012.

Distribution. – Guangxi, Sichuan, Yunnan, Xizang (new Province record); India, Bangladesh, Nepal, Myanmar, Vietnam, Laos, Thailand.

Genus *Monochamus* Dejean, 1821

Type species. – *Cerambyx sutor* Linnaeus, 1758.

43. *Monochamus gravidus* (Pascoe, 1858) (Figs 73–75)

New to Henan, Anhui, Zhejiang

Monohammus gravidus Pascoe, 1858: 245. Type locality: Borneo. Type depository: NHML.

Apriona multimaculata Pic, 1933: 31. Type locality: Shandong. Type depository: MNHN. Synonymized by Breuning, 1944: 445.

Specimens examined. – Henan: 1 ♀ (Fig. 74), Henan, no other information. Zhejiang: 1 ♂ (Fig. 75), Hangzhou, 1978-VI (IOZ(E) 1896993). Hunan: 1 ♂, Changsha, Yuelushan, 1957-VIII-2 (1063).

Picture examined. – Fig. 73, taken from Anhui, Jinzhai by Jin Chen in June, 2011.

Distribution. – Henan (new Province record), Shandong, Shaanxi, Anhui (new Province record), Zhejiang (new Province record), Hunan, Fujian; Malaysia (Borneo).

Genus *Neoxenicotela* Breuning, 1947

Type species. – *Neoxenicotela mausoni* Breuning, 1947.

44. *Neoxenicotela mausoni* Breuning, 1947 (Fig. 76)

New to Guangxi

Neoxenicotela mausoni Breuning, 1947: 11. Type locality: Vietnam, Tonkin. Type depository: Naturhistoriska Riksmuseet, Stockholm.

Maaia terminata Gressitt, 1951: 385, pl. 16, fig. 5. Type locality: Fujian. Type depository: SYSU. Synonymized by Breuning, 1956: 234.

Parapolytrechus [sic] *flavotarsus* Wang & Zheng, 2002: 377, figs 1–4. Type locality: Hainan. Type depository: Department of Biology, Nankai University, Tianjin, China (but unfound). Synonymized by Lin & Wang, 2012: 392.

Specimens examined. – Guangxi: 1 ♀ (Fig. 76), Jinxiu, Huawangshanzhuang, alt. 550 m, 1999-V-19, leg. Ming-Yuan Gao (IOZ(E) 1896997); 1 ♀, Jinxiu, Jingzhonggonglu, alt. 1100 m, 1999-V-12, Wen-Zhu Li; 1 ♂, 1 ♀, Jinxiu, Shengtangshan, alt. 900 m, 1999-V-18, Xing-Ke Yang.

Distribution. – Fujian, Hainan, Guangxi (new Province record); Vietnam.

Genus *Paraepepeotes* Pic, 1935.

Type species. – *Paraepepeotes breuningi* Pic, 1935.

45. *Paraepepeotes breuningi* Pic, 1935 (Fig. 77)

New to Yunnan.

Paraepepeotes Breuningi Pic, 1935: 16. Type locality: Vietnam, Tonkin. Type depository: MNHN.

Specimens examined. – Yunnan: 1 ♀, Yingjiangpingyuan, 1979-VI-18, leg. Ying-Lin Chen (IOZ(E) 1896991) and many specimens from Xizang.

Picture examined. – Fig. 77, taken Yunnan, Yingjiang by Wei-Wei Zhang in June, 2010.

Distribution. – Sichuan, Yunnan (new Province record), Xizang; India, Myanmar, Vietnam, Laos.

Genus *Uraecha* J. Thomson, 1864

Type species. – *Uraecha bimaculata* J. Thomson, 1864.

46. *Uraecha punctata* Gahan, 1888 (Fig. 78)

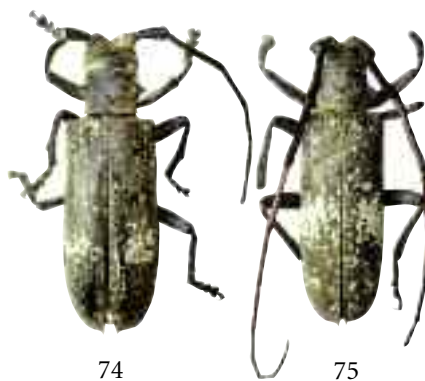
New to Hainan.

Uraecha punctata Gahan, 1888: 63. Type locality: China. Type depository: NHML.

Specimens examined. – Guangdong: 2 ♀♀, Dinghushan, 1979-VI-17/22, leg. Shi-Yang Xia. Hainan: 1 ♂, Qiongzong County, Wuzhishan, alt. 640 m, 1980-IV-4, leg. Fu-Ji Pu. Yunnan: 1 ♂, Xishuangbanna, Menglun, alt. 600 m, 1994-IV-21, leg. Xiao-Lin Chen.

Picture examined. – Fig. 78, taken from Hainan by Wenhsin Lin in April, 2011.

Distribution. – Jiangxi, Fujian, Guangdong, Hainan (new Province record), Hongkong, Yunnan, India, Vietnam.



73–75. *Monochamus gravidus* (Pascoe, 1858): 73, taken from Anhui, Jinzhai by Jin Chen in June, 2011; 74, ♀ from Henan; 75, ♂ from Zhejiang. 76. *Neoxenicotela mausoni* Breuning, 1947, ♀ from Guangxi. 77. *Paraepepeotes breuningi* Pic, 1935, taken from Yunnan, Yingjiang by Wei-Wei Zhang in June, 2010. 78. *Uraecha punctata* Gahan, 1888, taken from Hainan by Wenhsin Lin in April, 2011. 79. *Oberea formosana* Pic, 1911, taken Anhui, Jinzhai by Jin Chen in June, 2011.

Tribe Phytoeciini Mulsant, 1839

Genus *Oberea* Dejean, 1835

Type species. – *Cerambyx linearis* Linnaeus, 1760.

47. *Oberea formosana* Pic, 1911 (Fig. 79)

New to Anhui.

Oberea formosana Pic, 1911: 20. Type locality: Taiwan. Type depository: MNHN.

Oberea holoxantha var. *formosana*; Matsushita, 1933: 420.

Oberea formosana v. *spinipennis* Breuning, 1962: 163. Type locality: Malaysia, Borneo. Type depository: NHML.

Oberea formosana v. *clarior* Breuning, 1962: 163. Type locality: Zhejiang, Tianmushan. Type depository: National Museum of Natural History (Smithsonian).

Picture examined. – Fig. 79, taken Anhui, Jinzhai by Jin Chen in June, 2011.

Distribution. – Henan, Shaanxi, Jiangsu, Anhui (new Province record), Zhejiang, Hubei, Jiangxi, Hunan, Fujian, Taiwan, Guangdong, Hainan, Guangxi, Chongqing, Sichuan, Guizhou; North Korea, India, Nepal, Bangladesh, Myanmar, Vietnam, Laos, Thailand, Malaysia, Indonesia.

Tribe Pteropliini J. Thomson, 1860

Genus *Anaches* Pascoe, 1865

Type species. – *Sthenias dorsalis* Pascoe, 1858.

48. *Anaches dorsalis* (Pascoe, 1858) (Figs 80–83)

New to Zhejiang, Fujian, Guangxi, Chongqing and Guizhou.

Sthenias dorsalis Pascoe, 1858: 251. Type locality: India. Type depository: NHML.

Anaches dorsalis: Pascoe, 1865: 160.

Anaches albonotatus Pic, 1932: 25. Type locality: Vietnam, Tonkin. Type depository: MNHN. Synonymized by Breuning, 1965: 203.

Specimens examined. – Zhejiang: 1 ♂ (Fig. 81), Tianmushan, alt. 350 m, 1999-VI-5, *leg.* Ming-Yuan Gao (IOZ(E) 1896988). Fujian: 1 ♀, Huangkeng, 1965-VII; 1 ♀, 1981-VII-21. Guangxi: 1 ♀ (Fig. 82), Jinxiu, Fenzhan, alt. 800 m, 1999-V-13, *leg.* Hui Xiao (IOZ(E) 1896989). Sichuan: 1 ♂, Emeishan, Qingyinge, alt. 800-1000m, 1957-VII-4, *leg.* Fu-Xing Zhu. Guizhou: 1 ♀ (Fig. 83), Guiyang, Huaxi, 2011-VI, *leg.* Benke Shixi. Yunnan: 1 ♀, Jingdong, Waidaba, 1955-IV-27, *leg.* Xing-Chi Yang.

Picture examined. – Fig. 80, taken Chongqing, Simianshan by Feng Han in July, 2011.

Distribution. – Shaanxi, Zhejiang (new Province record), Fujian (new Province record), Hongkong, Guangxi (new Province record), Chongqing (new record), Sichuan, Guizhou (new Province record), Yunnan; India, Nepal, Bangladesh, Vietnam, Laos, Thailand.

Genus *Sthenias* Laporte, 1840

Type species. – *Lamia grisator* Fabricius, 1787.

49. *Sthenias (Albosthenias) partealbicollis* Breuning, 1968 (Fig. 84)

New to Guizhou.

Sthenias (Albosthenias) partealbicollis Breuning, 1968: 17. Type locality: Laos, Phou Khaokhoay. Type depository: BPBM.

Specimens examined. – Guizhou: 1 female (Fig. 84), Ceheng, Weinan, alt. 800–950m, 1979.V.23–27, leg. Shao-Kun Du (IZAS, IOZ(E) 1896996).

Distribution. – Guizhou (new Province record), Yunnan; Laos

50. *Sthenias gracilicornis* Gressitt, 1937 (Figs 85–87)

New to Hainan, Guangxi, Xizang.

Sthenias gracilicornis Gressitt, 1937b: 602. Type locality: Jiangxi, Xiangshan (Hongshan). Type depository: California Academy of Sciences, San Francisco

Specimens examined. – Hainan: 1 ♀ (Fig. 86), Baisha County, Yinggeling, Nanmaola, 109.38460°E, 18.95355°N, alt. 1261 m, 2009-V-14, leg. Xin-Lei Huang. Guangxi: 1 ♀ (Fig. 87), Jinxiu, Shengtangshan, alt. 900 m, 1999-V-18, leg. Xue-Zhong Zhang (IZAS, IOZ(E) 1896995); 1 ♂, Jinxiu, 1981-IX-22, leg. Qi-Jing You; 1 ♂, Ningming, Longrui, alt. 1500 m, 1984-V-19, leg. Jia-Jun Zhang. Yunnan: Cheli, Shihuiyao, alt. 700 m, 1957-IV-27, leg. Shu-Yong Wang.

Picture examined. – Fig. 85, taken from Xizang, Chayu by Ye Liu in July, 2011.

Distribution. – Jiangxi, Hunan, Fujian, Guangdong, Hainan (new Province record), Hongkong, Guangxi (new Province record), Yunnan, Xizang (new Province record).

Tribe Saperdini Mulsant, 1839

Genus *Glenea* Newman, 1842

Type species. – *Glenea lepida* Newman, 1842.

51. *Glenea centroguttata* Fairmaire, 1897 (Figs 88–89)

New to Gansu and Guangdong.

Glenea centroguttata Fairmaire, 1897: 232. Type locality: Xizang (Thibet). Type depository: MNHN.

Glenea (s. str.) issikii Mitono, 1934: 490, fig. 1. Type locality: Taiwan. Type depository: Japan. Synonymized by Gressitt, 1951: 574.

Specimens examined. – Gansu: 1 ♂ (Fig. 89), Kangxian, Qinghelinchang, alt. 1400 m, 1998-VII-14, leg. Xue-Zhong Zhang, and many specimens from Henan, Fujian, Taiwan, Guangxi, Sichuan, Guizhou, Yunnan and Xizang.

Picture examined. – Fig. 88, taken from Guangdong, Nanling by Zhi-Zhou Yu in July, 2012.

Distribution. – Henan, Shaanxi, Gansu (new Province record), Fujian, Taiwan, Guangdong (new Province record), Hongkong, Guangxi, Sichuan, Yunnan, Xizang.

52. *Glenea obliqua* Gressitt, 1939 (Fig. 90)

New to Shaanxi.

Glenea obliqua Gressitt, 1939a: 119, pl. 2, fig. 9–11. Type locality: Zhejiang, Tianmushan. Type depository: IZAS.

Glenea roubali Heyrovsky, 1939: 68. Type locality: Zhejiang, Tianmushan. Type depository: Musée National de Prague. Synonymized by Gressitt, 1951: 577.

Glenea acutooides ssp. *obliqua*: Breuning, 1956: 787.

Specimens examined. – Shaanxi: 1 ♀, Zhouzhi county, Houzhenzi env., alt. 1200 m, 1998-VII-18/23, leg. V. Beneš (CCH); 1 ♂, 1 ♀, same data but alt. 1350 m, 1999-VI-24, leg. You-Wei Zhang (IZAS); 1 ♀ (Fig. 90), Zhouzhi county, Houzhenzi, 107.8377°E, 33.8519°N, alt. 1271 m, 2007-V-25, leg. Mei-Ying Lin (IOZ(E) 1897000); 4 ♂♂, 6 ♀♀, Qinlingshan, 6 km East of Xunyangba, alt. 1000–1300 m, 2000-V-23/VI-13, leg. C. Holzschuh (CCH); 1 ♀, Qinlingshan, 12 km SW. of Xunyangba, alt. 1900–2250 m, 2000-VI-14/18, leg. C. Holzschuh (CCH). Henan: 1 ♀, W. Henan, Funiushan, Baotianman, 2005-V-15/17, leg. J. Turna (CCH); 1 ♀, same data but 2005-VI-2/3. Anhui: 1 ♀, Huangshan, 1936-VI-22 (identified by Gressitt in 1950); 1 ♀, Huangshan, 1936-VI-23 (IZAS). Zhejiang: HOLOTYPE ♂, T'ienmu Shan, 1936-VI-10, leg. Père O. Piel (IOZ(E) 217591); PARATYPES: 1 ♂, 1936-VII-22, leg. Père O. Piel; 1 ♂, same data but VI-16.

Distribution. – Shaanxi (new Province record), Henan (new Province record), Anhui, Hubei, Zhejiang, Fujian; Vietnam.

53. *Glenea pallidipes* Pic, 1926 (Figs 91–92)

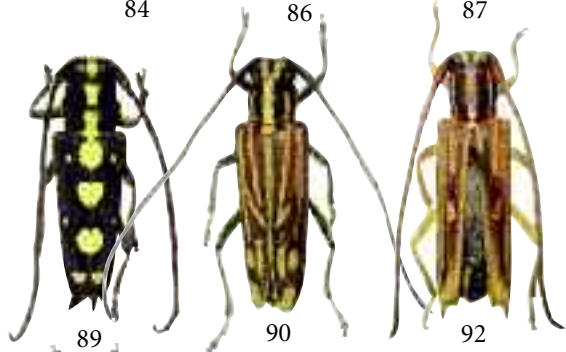
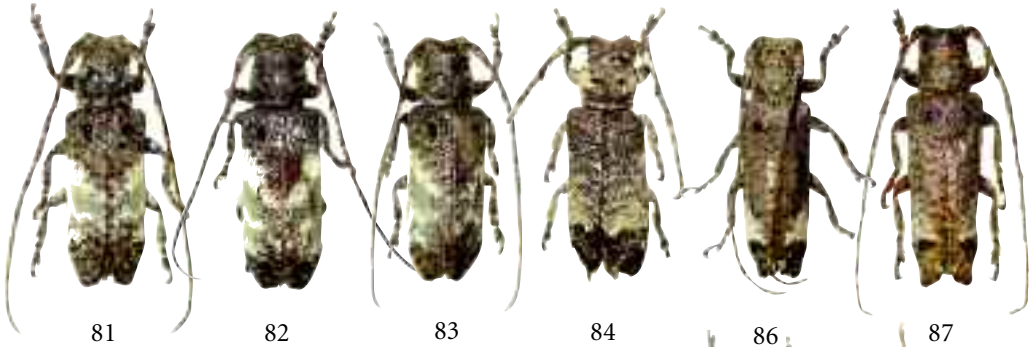
New to Guangxi.

Glenea pallidipes Pic, 1926: 23. Type locality: Vietnam, Tonkin. Type depository: MNHN.

Specimens examined. – Guangxi: 1 ♂, 1 ♀ (Fig. 92), Jinxiu, Luoxiang, alt. 400 m, 1999-V-15, leg. Hui Xiao, Xue-Zhong Zhang. Guizhou: 1 ♀, Maolan, 1998-X-25, leg. Mao-Fa Yang. Yunnan: 1 ♂, Menglun, 1982-IV-23, leg. Sheng-Qiao Jiang; 1 ♂, Mengla, 1982-IV-20, leg. Sheng-Qiao Jiang; 1 ♂, Jinping, Mengla, alt. 400 m, 1956-IV-25, leg. Ke-Ren Huang etc; 1 ♂, Hekou, Nanxi Huayudong, alt. 150 m, 2010-IV-28, leg. Xiao-Dong Yang; 1 ♀, same data, but 2010-IV-27, leg. Wenhsin Lin, and many specimens from Vietnam and Laos.

Picture examined. – Fig. 91, taken from Yunnan, Xishuangbanna by Zhi-Liang Wang in September, 2013.

Distribution. – Guangxi (new Province record), Guizhou, Yunnan; Vietnam Laos.



80–83. *Anches dorsalis* (Pascoe, 1858): 80, taken Chongqing, Simianshan by Feng Han in July, 2011; 81, ♂ from Zhejiang; 82, ♀ from Guangxi; 83, ♀ from Guizhou. 84. *Sthenias (Albosthenias) partealbicollis* Breuning, 1968, ♀ from Guizhou. 85–87. *Sthenias gracilicornis* Gressitt, 1937: 85, taken from Xizang, Chayu by Ye Liu in July, 2011; 86, ♀ from Hainan; 87, ♀ from Guangxi. 88–89. *Glenea centroguttata* Fairmaire, 1897: 88, taken from Guangdong, Nanling by Zhi-Zhou Yu in July, 2012; 89, ♂ from Gansu. 90. *Glenea obliqua* Gressitt, 1939, ♀ from Shaanxi. 91–92. *Glenea pallidipes* Pic, 1926: 91, taken from Yunan, Xishuangbanna by Zhi-Liang Wang in Spetember, 2013; 92, ♀ from Guangxi. 93–94. *Glenea pieliana nigra* Gressitt, 1940: 93, taken from Guangdong, Nanling by Bo Lei in August, 2009; 94, ♀ from Hainan.

54. *Glenea pieliana nigra* Gressitt, 1940 (Figs 93–94)

New to Guangdong and Hainan.

Glenea pieliana nigra Gressitt, 1940b: 194, pl. V, fig. 3. Type locality: Jiangxi. Type depository: IZAS.

Specimens examined. – Jiangxi: HOLOTYPE ♀, Ku-ling (Guling), 1935-II-10, leg. Père O. Piel (IZAS, IOZ(E)217593). Fujian: 1 ♀, Jianyang, Huangheng, Aotou, alt. 850–950 m, 1960-IV-29, leg. Fu-Ji Pu; 1 ♀, same data but 1960-V-5; 1 ♀, Chong'an, Xingcun, Sangang, alt. 720–850 m, 1960-V-29, leg. Sheng-Qiao Jiang; 1 ♀, Shibatiao, 1981-VI-16, leg. Qing-Ren She. Hainan: 1 ♀, Hainan, Jianfengling, Tianchi, alt. 800 m, 1980-IV-16, leg. Fu-Ji Pu, Shu-Yong Wang (IZAS); 2 ♀♀ (Fig. 94), Hainan Is., Diaoluo, alt. 1000 m, 1980-IV-23, leg. Shu-Yong Wang (IOZ(E) 1896999).

Picture examined. – Fig. 93 taken from Guangdong, Nanling by Bo Lei in August, 2009.

Distribution. – Jiangxi, Fujian, Guangdong (new Province record), Hainan (new Province record), Guangxi.

Genus *Mimocagosima* Breuning, 1968.

Type species. – *Mimocagosima ochreipennis* Breuning, 1968.

55. *Mimocagosima humeralis* (Gressitt, 1951) (Fig. 95)

New to Guangdong.

Mandibularia humeralis Gressitt, 1951: 561, pl. 21, fig. 4. Type locality: Fujian. Type depository: SYSU.

Mimocagosima humeralis: Lin, Li & Yang, 2007:5, figs. 6–11.

Specimens examined. – HOLOTYPE ♀, Fujian, Shaowu, Dazhulan, alt. 1200 m, 1940-VII-25 (SYSU); 1 PARATYPE ♀, Guangxi, Yaoshan (IZAS). Yunnan: 1 ♂, 1 ♀, Yunnan, Malipo, NW env., 1200–1700 m, (N23°10–13', E104°37–40'), 1995-V-10/13, leg. L. & R. Businský (CCH).

Picture examined. – Fig. 95 taken from Guangdong, Nanling by Zhi-Zhou Yu in July, 2011.

Distribution. – Fujian, Guangdong (new Province record), Guangxi, Yunnan.

Genus *Parastenostola* Breuning, 1952

Type species. – *Saperda brunnipes* Gahan, 1888.

56. *Parastenostola nigroantennata nigroantennata* Lin & Yang, 2008 (Fig. 96)

New to Hainan.

Parastenostola nigroantennata nigroantennata Lin & Yang, *In*: Lin, Li & Yang. 2008: 12, figs 24–29. Type locality: Guangxi. Type depository: IZAS.

Specimens examined. – Hainan: 2 ♂♂, Wuzhishan, Shuiman, alt. 700 m, 2007-V-10, *leg.* Zong-Yi Zhao (IOZ(E) 1867914–15); 5 ♂♂, Wuzhishan, Baohuquguanliju (Nature Reserve manage office), alt. 708 m, 18.90840°N, 109.67359°E, *leg.* Mei-Ying Lin & Wenhsin Lin by light trap (with one numbered 1896977, Fig. 96). Guangxi: HOLOTYPE ♂, Tianlin county, Langping Xiang, 1200–1400 m, 2002-V-29, *leg.* Liu Jianwen (IOZ(E) 1859304). 1 PARATYPE ♂, Tianlin county, Jiudongping, 1200–1300 m, 2002-V-27, *leg.* Yang Xiujuan (HBUM); 1 PARATYPE ♀, Tianlin county, Yaojiawan, 1200–1400m, 2002-VI-3, *leg.* Yang Xiujuan (HBUM); 1 ♂, 1 ♀, PARATYPES, Wuming county, 2005-VI-20/30, *leg.* Zhan Chenghui (IOZ(E) 1859305–06); 1 PARATYPE ♀, NNW 100 km of Nanning, Mt. Damingshan, 2005-VI (CWIC). Guizhou: 1 PARATYPE ♀, Guiyang Forest Park, 2007-V-9, *leg.* Yuan Meng & Zhang Long (IOZ(E) 1859307).

Distribution. – Hainan (new Province record), Guangxi, Guizhou.

Tribe Xylorhizini Lacordaire, 1872

Genus *Cyrtogrammus* Gressitt, 1939

Type species. – *Cyrtogrammus lateripictus* Gressitt, 1939.

57. *Cyrtogrammus lateripictus* Gressitt, 1939 (Fig. 97)

New to Hainan.

Cyrtogrammus lateripictus Gressitt, 1939b: 67, pl. 1, fig. 9. Type locality: Guangdong, Lianxian (Kwangtung, Lien District). Type depository: SYSU.

Specimens examined. – Hainan: 1 ♂ (Fig. 97), Baisha County, Yinggeling, Nanmaola, alt. 1261 m, 2009-V-10, *leg.* Xin-Lei Huang (IOZ(E) 1867923). Guangxi: 1 ♂, Miaoershan, Jiuniutang, alt. 1100 m, 1985-VII-5, *leg.* Su-Bai Liao; 1 ♀, Nanning, Damingshan, Feiyingfeng, 2011-VIII-9, *leg.* Shan-Yi Zhou.

Distribution. – Guangdong, Hainan (new Province record), Guangxi (Yang & Huang, 2013); Sumatra (Breuning, 1957).

Genus *Thylactus* Pascoe, 1866

Type species. – *Thylactus angularis* Pascoe, 1866.

58. *Thylactus densepunctatus* Chiang & Li, 1984 (Figs 98–100)

New to Guangdong and Hainan.

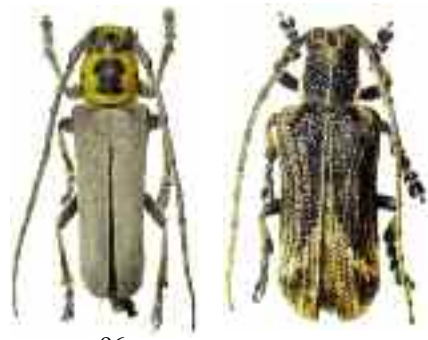
Thylactus densepunctatus Chiang & Li, 1984: 98, 100, fig. 3. Type locality: Yunnan, China. Type depository: Southwest University.

Specimens examined. – Guangdong: 1 ♀ (Fig. 98), Nanling, 2009-V-8, *leg.* Chao-Min Huang. Hainan: 1 ♂ (Fig. 99), Qiongzong County, Limushan, Qijiacun, alt. 657 m, 19.17310N, 109.71968E, 2010-IV-7, *leg.* Mei-Ying Lin by light trap (IZAS, IOZ(E) 1904723); 2 ♀♀, Ledong County, Jianfengling, Tianchi Bishushanzhuang, alt. 950 m, 2011-V-28/29, *leg.* Wenhsin Lin (IZAS, IOZ(E) 1904724 & CCCC); 1 ♀, Ledong County, Jianfengling, Jianfengzhen, Redaiyulinshiyansuo (tropical forest lab), alt 150 m, 2011-V-30, *leg.* Wenhsin Lin by light trap. (CCCC); 1 ♀, Ledong County, Jianfengling, Yulingu, alt. 636 m, 18.74686N,

108.92988E, 2007-III-20, leg. Hong-Liang Shi by light trap (IZAS). Yunnan: 1 ♂, Yunnan, Xishuangbanna, Menghai, NRWNR, Guomenshan station, alt. 1120 m, 22.24497°N, 100.60635°E, 2011-VII-5, leg. Zhi-Ming Ma (IZAS, IOZ(E) 1904720); 1 ♂, same data but 2012-VIII-10 (IZAS);

Distribution. – China: Guangdong (new Province record), Hainan (new Province record), Yunnan.

Remarks. – The greyish testaceous pubescent markings on pronotum and elytra are quite variable and easy to lost. The male is almost same to female but have paired setose patches (sex patches, Fig. 100) on ventrites 4 and 5 (= sternites VI & VII).



96 97



100



98 99

95. *Mimocagosima humeralis* (Gressitt, 1951), taken from Guangdong, Nanling by Zhi-Zhou Yu in July, 2011. 96. *Parastenostola nigroantennata nigroantennata* Lin & Yang, 2008, ♂ from Hainan. 97. *Cyrtogrammus lateripictus* Gressitt, 1939, ♂ from Hainan. 98–100. *Thylactus densepunctatus* Chiang & Li, 1984: 98, ♀ from Guangdong; 99, ♂ from Hainan. 100. showing the male sex patches.

Acknowledgements

I wish to express my sincere thanks to all the photographers (marked in the text and figure legends), collectors (showed in the “specimens examined” part) and colleagues who help to make identification for special groups (marked in the text). I thank Eric Jiroux for editing and publishing this paper.

References

- BATES (H. W.), 1884. – Longicorn beetles of Japan. Additions, chiefly from the later collections of Mr. George Lewis; and notes on the synonymy, distribution, and habits on the previously known species. *The Journal of the Linnean Society of London. Zoology*, 18: 205-262, pls 1–2.
- BLESSIG (C.), 1872. – Zur Kenntniss der Käferfauna Süd-Ost-Sibiriens insbesondere des Amur-Landes. Longicornia. *Horae Societatis Entomologicae Rossicae*, St. Petersburg, 9(2): 161-260, pls VII–VIII.
- BREUNING (S.), 1947. – Nouvelles formes de Longicornes du Musée de Stockholm. *Arkiv för Zoologi*, Uppsala 39A(6): 1-68.
- BREUNING (S.), 1963. – Neue Lamiinae aus dem Museum G. Frey (Col. Ceramb.). *Entomologischen Arbeiten aus dem Museum G. Frey*, Tutzing bei München, 14(1): 76-90.
- BREUNING (S.), 1965. – Revision der Apomecynini der asiatisch-australischen Region (Coleoptera, Cerambycidae). *Entomologische Abhandlungen aus dem Staatlichen Museum für Tierkunde in Dresden*, 30: 1-528, 9 pls, 99 figs. [1964-1965]
- BREUNING (S.), 1968. – Contribution à la connaissance des Lamiens du Laos (Coll. Céramb.) 15^e partie et fin. *Bulletin de la Société Royale des Sciences Naturelles du Laos*, 16: 3-44 + corrigenda, 9 figs.
- CHEVROLAT (L. A. A.), 1852. – Description de Coléoptères nouveaux. *Revue et Magasin de Zoologie*, Paris, (2)4: 414-418.
- CHEVROLAT (L. A. A.), 1863. – Clytides d'Asie et d'Océanie. *Mémoires de la Société Royale des Sciences de Liège*, 18(4): 253-350.
- CHIANG (S. N.) & LI (L. S.), 1984. – Three new longicorn beetles from Yunnan, China (Coleoptera, Cerambycidae) *Entomotaxonomia*, 6(2-3): 97-101, 3 figs.
- DANILEVSKY (M. L.), 2013. – Additions and corrections to the new Catalogue of Palaearctic Cerambycidae (Coleoptera) edited by I. Löbl and A. Smetana, 2010. Part. VII. Humanity space, *International Almanac*, 2(1): 170-210.
- DANILEVSKY (M. L.), 2013b. – Six new Longicorn (Coleoptera, Cerambycidae) taxa from Russia and adjacent countries. Humanity space - *International Almanac*, 2 (supplement 2): 28-41, 18 figs.
- DOHRN (C. A.), 1878. – Exotisches. *Stettiner Entomologische Zeitung*, 39(10-12): 444-462.
- FABRICIUS (J. C.), 1801. – *Systema eleutheratorum secundum ordines, genera, species: adiectis synonymis, locis, observationibus, descriptionibus*. *Bibliopoli Academici Novi, Kiliae* 2: 1-687.
- FAIRMAIRE (L. M. H.), 1895. – Deuxième note sur quelques Coléoptères des environs de Lang-Song. *Annales de la Société Entomologique de Belgique*, Bruxelles, 39: 173–190.
- FAIRMAIRE (L. M. H.), 1897. – Description de Coléoptères nouveaux de la Malaisie, de l'Inde et de la Chine. *Notes from the Leyden Museum*, 19(3-4): 209–233.
- GAHAN (C. J.), 1888. – IX. On new Longicorn Coleoptera from China. *The Annals and Magazine of Natural History*, London 6 (2) 7: 59-67.
- GAHAN (C. J.), 1890. VII. - Descriptions of new Species of Longicornia from India and Ceylon. *The Annals and Magazine of Natural History*, London, 6(5) 25: 48–66, pl. VII, 8 figs.

GRESSIT (J. L.), 1937a. – New Longicorn Beetles from China, II. *Lingnan Science Journal*, 16(1): 89–94.

GRESSIT (J. L.), 1937b. – New longicorn beetles from China, IV (Coleoptera, Cerambycidae). *Lingnan Science Journal*, 16(4): 595–621, pls 19–20.

GRESSIT (J. L.), 1939a. – A Collection of Longicorn Beetles from T'ien-mu Shan, East China (Coleopter, Cerambycidae). *Notes d'Entomologie Chinoise*, 6(4): 81–133, pls 1–3.

GRESSIT (J. L.), 1939b. – A study of the Longicorn Beetles of Kwangtung Province, S. China (Coleoptera, Cerambycidae). *Lingnan Science Journal*, 18(1): 1–122, 3 pls

GRESSIT (J. L.), 1940a. – The Longicorn Beetles of Hainan Island, Coleptera, Cerambycidae. *The Philippine Journal of Science*, 72(1–2): 1–239, pls 1–8.

GRESSIT (J. L.), 1940b. – Coléoptères Longicornes Chinois du Musée Heude. *Notes d'Entomologie Chinoise*, 7(8): 171–202, pls 1–5.

GRESSIT (J. L.), 1942a. – New Longicorn Beetles from China, 8 (Coleoptera, Cerambycidae). *Special Publication of the Lingnan Natural History Survey & Museum*, 2: 1–6, 5 figs.

GRESSIT (J. L.), 1942b. – Nouveaux Longicornes de la Chine Orientale. *Notes d'Entomologie Chinoise*, 9(5): 79–97, 2 pls.

GRESSIT (J. L.), 1948. – New Longicorn Beetles from China, 12 (Col.: Ceramb.). *Lingnan Science Journal*, 22(1–4): 43–52, 1 pl.

GRESSIT (J. L.), 1951. – *Longicornia*, 2: Longicorn Beetles of China. Paul Lechevalier, Paris: 667 pp.

HAYASHI (M.), 1981. – Studies on Asian Cerambycidae, 4 (Coleoptera). *The Entomological Review of Japan*, 36(1): 27–32.

HOLZSCHUH (C.), 1998. – Beschreibung von 68 neuen Bockkäfern aus Asien, überwiegend aus China und zur Synonymie einiger Arten (Coleoptera: Cerambycidae). *Schriftenreihe der Forstlichen Bundesversuchsanstalt (FBVA-Berichte)*, Wien, 107: 1–65, 84 figs.

HOLZSCHUH (C.), 1999. – Beschreibung von 71 neuen Bockkäfern aus Asien, vorwiegend aus China, Laos, Thailand und Indien (Coleoptera, Cerambycidae). *Schriftenreihe der Forstlichen Bundesversuchsanstalt (FBVA-Berichte)*, Wien, 110: 1–64, 71 figs.

HOLZSCHUH (C.), 2003. – Beschreibung von 72 neuen Bockkäfern aus Asien, vorwiegend aus China, Indien, Laos und Thailand (Coleoptera, Cerambycidae). *Entomologica Basiliensa*, 25: 147–241, 72 figs.

HOLZSCHUH (C.), 2007. – Beschreibung von 80 neuen Bockkäfern aus der orientalischen und palaearktischen Region, vorwiegend aus China, Laos und Borneo (Coleoptera, Cerambycidae). *Entomologica Basiliensia et Collectionis Frey*, 29: 177–286, 80 figs.

HUA (L. Z.), 2002. – *List of Chinese Insects*, Vol 2. Zhongshan (Sun Yat-sen) University Press, Guangzhou: 612 pp.

HUA (L. Z.), NARA (H.), SAEMULSON (misspelling of Samuelson) (G. A.) & LINGAFELTER (S. W.), 2009. – *Iconography of Chinese Longicorn Beetles (1406 species) in Color*. Sun Yat-sen University Press, Guangzhou: 474 pp.

JIANG (S. N.), PU (F. J.) & HUA (L. Z.), 1985. – *Economic insect Fauna of China*, vol. 35. Coleoptera, Cerambycidae. Beijing, Science Press: 189 pp.

KANO (T. F.), 1930. – New and unrecorded Longicorn-beetles from the Japan-empire. *Insecta Matsumurana*, Sapporo, 5(1-2): 41-48, 5 figs.

KRAATZ (G.), 1879. – Ueber die Bockkäfer Ost-Sibiriens, namentlich die von Christoph am Amur gesammelten. *Deutsche entomologische Zeitschrift*, Berlin, 23(1): 77-117, pl. I.

LIN (M. Y.), LI (W. Z.), Yang (X. K.), 2008. – Taxonomic review of three saperdine genera, *Mandibularia* Pic, *Mimocagosima* Breuning and *Parastenostola* Breuning (Coleoptera, Cerambycidae, Lamiinae, Saperdini). *Zootaxa*, Auckland, 1773: 1-17, 33 figs.

LIN (M. Y.) & WANG (W. K.), 2012. – *Parapolytrechus* [sic] *flavotarsus* Wang & Zheng, 2002, a new synonym of *Neoxenicotela mausoni* Breuning, 1947 (Coleoptera, Cerambycidae, Lamiinae). *Entomotaxonomia*, 34(2): 391-394, 5 figs.

LINNAEUS (C.), 1758. – *Systema naturæ per regna tria naturæ secundum classes, ordines, genera, species, cum characteribus, differentiis, synonymis, locis. Systema naturæ (Editio 10) Laur. Salvius. Holmiae*. 1: iii + 824 pp.

LÖBL (I.) & SMETANA (A.), 2010. – *Catalogue of Palaearctic Coleoptera*, Vol. 6. Stenstrup: Apollo Books: 373 pp.

MIROSHNIKOV (A. I.), 2014. – A review of the genus *Paraclytus* Bates, 1884, with the description of a new species from China (Coleoptera, Cerambycidae). In: Konstantinov A. S., Slipinski S. A. & Solodovnikov A. Yu. (Editors): *Advances in Studies on Asian Cerambycids* (Coleoptera, Cerambycidae): 73-132, 208 figs, 2 cartes. KMK Scientific Press Ltd. ISBN 978-5-87317-820-9.

MOTSCHULSKY (V. I.), 1860. – Coléoptères rapportés de la Sibérie orientale et notamment des pays situés sur les bords du fleuve Amour par M. M. Schrenk, Maak, Ditmar, Voznessenski etc, déterminés et décrits par V. de Motschulsky. In Dr. Leopold von Schrenk's, «*Reisen und Forschungen im Amur-Lande*», Saint-Petersbourg, 2(2) (Coleopteren): 77-257 + carte, pls IX–X.

PASCOE (F. P.), 1858. – 17. On New Genera and Species of Longicorn Coleoptera. Part 3. *The Transactions of the Entomological Society of London*, (2)4(6): 236-266, pls XXV, XXVI.

PASCOE (F. P.), 1863. – Notices of new or little-known Genera and Species of Coleoptera. Part 4. *The Journal of Entomology*, London, 2(7): 26-56, pls II-III.

PIC (M.), 1900. – Contribution à l'étude des Cerambycidae de Chine et du Japon. *Annales de la Société Entomologique de Belgique*, Bruxelles, 44(1): 16-19.

PIC (M.), 1914. – Quelques longicornes de Chine, Formose, et autres régions asiatiques. *Matériaux pour servir à l'étude des Longicornes*, 9(1): 15-19.

PIC (M.), 1926. – Nouveautés diverses. *Mélanges Exotico-Entomologiques*, 47: 1-32.

PIC (M.), 1935. – Nouveautés diverses. *Mélanges Exotico-Entomologiques*, 66: 1-36.

PU (F. J.) & YANG (D. R.), 1992. – *Insects of Wuling Mountains area, southwestern China*. Science Press, Beijing: 293-305.

SCHWARZER (B.), 1925. – Sauters Formosa-Ausbeute (Cerambycidae. Col.). (Subfamilie Cerambycinae.). *Entomologische Blätter*, 21(1): 20–30.

TAVAKILIAN (G.) & CHEVILLOTTE (H.), 2014. – Titan: base de données internationales sur les Cerambycidae ou Longicornes. Version 3.0. Available from: <http://lully.snv.jussieu.fr/titan/> (Accessed on June 28, 2014).

TIPPMANN (F. F.), 1955. – Zur Kenntnis der Cerambycidenfauna Fukiens (Süd-Ost-China). *Koleopterologische Rundschau*, Wien 33(1–6): 88-141, 22 figs.

WHITE (A.), 1853. – *Longicornia* 1. Catalogue of the coleopterous insects in the collection of the British Museum, London 7:1-174, pls. 1-4.

WHITE (A.), 1858. – XXVIII. Descriptions of some apparently unrecorded species of Longicorn Beetles, belonging to the genera *Phrissoma*, *Nyphona*, &c. *The Annals and Magazine of Natural History*, London, 3(2)10: 264-276.

XIE (G.-L.) & WANG (W.-K.), 2012. – [*Chlorophorus caragana* sp.n.]: In: Sh.-X. Zong, G.-L. Xie, W.-K. Wang, Y. Luo & Ch.-J. Cao: A new species of *Chlorophorus* Chevrolat (Coleoptera, Cerambycidae, Cerambycinae) from China with description of biology. *Zootaxa*, 3157: 54-60.

YANG (R.-G.) & HUANG (J.-H.), 2013. – Cerambycidae. pp 168-181. In: Zhou S.-Y., Zhou P.-N. (eds) *Insects of Damingshan, Guangxi*. Guilin: Guangxi Normal University Press: 373 pp, 16 pls.