

A TAXONOMIC STUDY OF THE GENUS *HAMPSONELLA* DYAR IN CHINA (LEPIDOPTERA, LIMACODIDAE)

WU Chun-Sheng, FANG Cheng-Lai

National Zoological Museum of China, Institute of Zoology, Chinese Academy of Sciences, Beijing 100101, China

Abstract Two species of the genus *Hampsonella* Dyar are recognized from China, including a new species, *H. albidula*, described herein. The photographs and the genital illustration of the examined species are given. A key to the Chinese species of the genus is provided.

Key words Lepidoptera, Limacodidae, *Hampsonella*, new species, China.

The genus *Hampsonella* was erected by Dyar in 1898, based on the type species, *Parasa dentata* Hampson. Hering (1931) transferred the second species, *Natada acatharta* Hampson, to the genus. Yoshimoto (1994) described the third species, *Hampsonella marvelosa*, from Nepal. In China, one species has been recorded (Hering, 1931) up to now. In this paper, two species are reported from China, of which one species is described as new to science.

The type specimens of the new species are deposited in the Institute of Zoology, Chinese Academy of Sciences, Beijing, China.

Hampsonella Dyar, 1898

Hampsonella Dyar, 1898. Psyche, Camb. 8: 274.

Type species: *Parasa dentata* Hampson, [1893] 1892

Antenna filiform in male. Labial palpus short, porrect. Hind tibia with 2 pairs of spurs. Forewing with R_2 separated, R_{3-5} stalked. Hindwing with M_1 and R_s stalked; $Sc + R_1$ anastomosed with anterior edge of cell near base; lower angle of cell projected slightly.

Male genitalia with typical of limacodid ground plan. Female genitalia with spiral ductus bursae and corpus bursae with a lenticular array of numerous stellate signa.

Distribution. China, Nepal, India.

Key to the species in China

- The darker patch with a grayish white centre in the forewing; juxta without process laterally *H. dentata*
The darker patch without a grayish white centre in the forewing; juxta with a process laterally *H. albidula* **sp. nov.**

Hampsonella dentata (Hampson, [1893] 1892) (Figs. 1, 3)

Parasa dentata Hampson, [1893] 1892. *Fauna Br. India (moths)*, 1: 391.

Hampsonella dentata (Hampson): Dyar, 1898. 8: 274; Hering, 1931: 720.

Specimens examined. Shaanxi, Ningshan County, Huoditang 1 580 m, 1 ♂, 26 July 1998, YUAN De-

Cheng; Ningshan, 2 ♀♀, 6 ♂♂, 25 July–7 Aug. 1979, HAN Yin-Heng (L06291); Liuba County, Miaotai, 1 350 m, 1 ♂, 21 July 1998, YAO Jian (L06290). Guangxi, Wuming County 1 200 m, 1 ♀, 22 Aug. 1984, JIANG Jin-Pei. Gansu, Zhengning County, Zhongwang, 1 ♀, 7 July 1979, WANG Xiao-Hua. Hunan, Yuedi, 1 ♂, 8 Sept. 1981, WANG Liu. Hubei, Shennongjia County, 1 640 m, 1 ♂, 24 July 1980, YU Pei-Yu. Sichuan, Mt. Emei 1 800 m, 1 ♂, 31 July 1957; Panzhihua City, 1 ♂, 22 Aug. 1980, ZHANG Bao-Lin. Henan, Mt. Funiu, 1 ♀, 1 ♂, 7–9 Aug. 1993, WANG Zhi-Guo; Xixia, Huangshi'an, 1 ♂, 1 ♀, 18 July 1998, SHEN Xiao-Cheng; Neixiang County, Baotianman 1 200 m, 1 ♂, 17 Aug. 2003; Xinyang, Mt. Jigong, 1 ♀, 8 Aug. 1998.

Distribution. Hubei, Henan, Guangxi, Sichuan, Shaanxi, Gansu; India.

Hampsonella albidula **sp. nov.** (Figs. 2, 4)

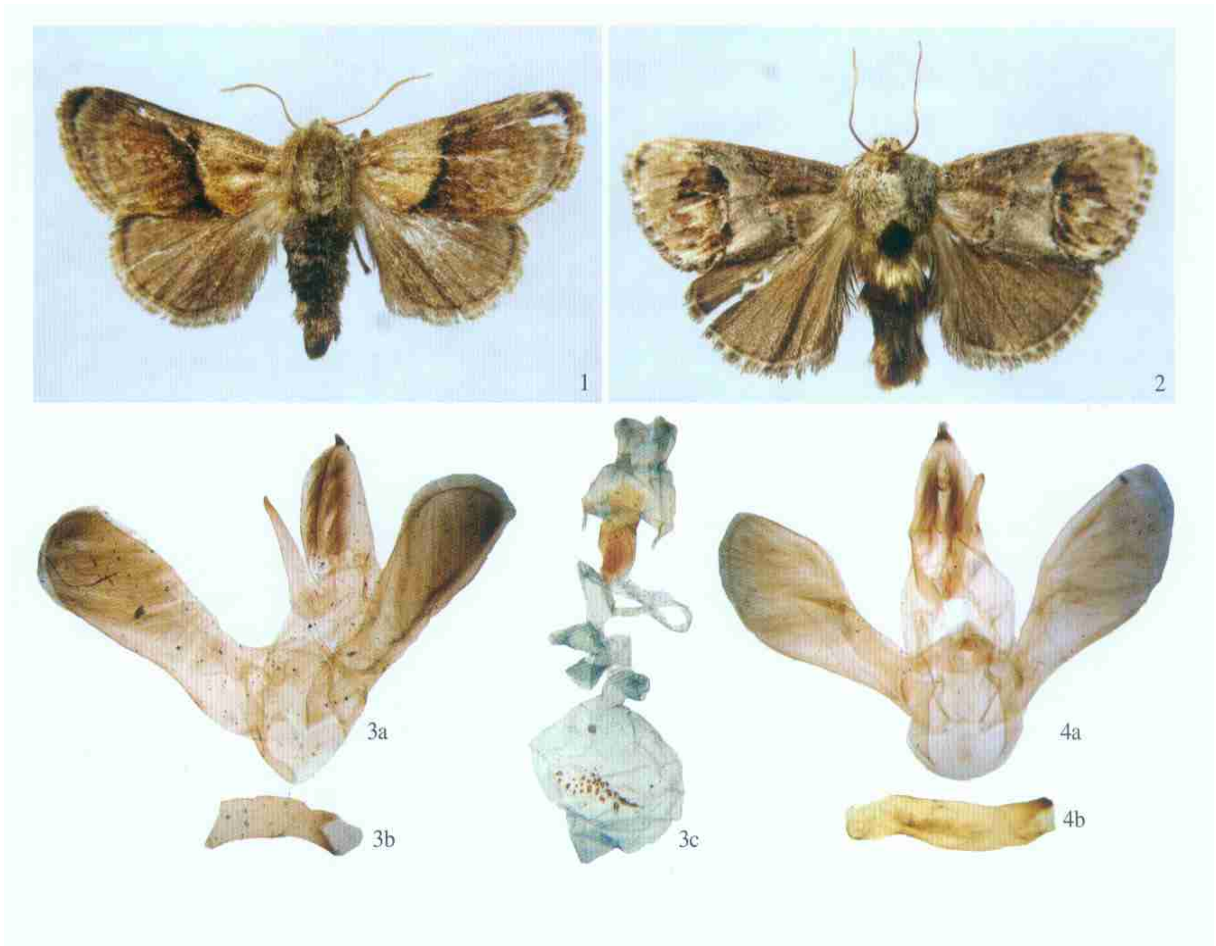
♂. Wing expanse 26–28 mm. Body dark brown. Forewing ochreous, inner and medial fasciae blackish brown, serrate more or less, full with blackish purple between them; out of medial fascia a big pale blackish brown patch with a grayish white centre; terminal fascia blackish brown, composed of series dots; cilia pale yellowish brown. Hindwing dark brown, usually with a terminal fascia.

Male genitalia (Fig. 4). Uncus with a small subapical process; gnathos long, apex blunt; valva narrow and long, base narrower than discal portion, apex broadly rounded; juxta with a process at middle of each lateral margin; aedeagus thick and short, discal part with a long and slender sclerite, which bears many minute dents.

Holotype ♂, Zhejiang, Fuyang County (30°N, 119.9°E), 15 Oct. 1984 (L06292). Paratypes: 1 ♂, Jiangxi, Shicheng County, 16 Oct. 1980; 1 ♂, Yunnan, Eryuan County, Pingtoushan 1 800 m, 24 July

National Natural Science Foundation of China (30770270, 30499341) and National Science Fund for Fostering Talents in Basic Research (Special Subjects in Animal Taxonomy, NSFJ0630964J0109).

Received 22 Sep. 2008, accepted 20 Nov. 2008.



Figs. 1-4. *Hampsonella* spp. 1-2 Adults. 1. *H. dentata* (Hampson). 2. *H. albidula* sp. nov. 3-4. Genitalia (a. Male. b. Aedeagus. c. Female) 3. *H. dentata* (Hampson). 4. *H. albidula* sp. nov.

1980 (L06293).

Distribution. Zhejiang, Jiangxi, Yunnan.

Remarks. This new species is related to *H. dentata* (Hampson), but differs from the latter by the darker patch with a grayish white centre in the forewing and the juxta with a process at the middle of each lateral margin in the male genitalia.

Etymology. The specific name is derived from Latin

“*albidulus*” (= whitish), corresponding to the grayish white centre of the dark patch on the forewing.

REFERENCES

- Hering, M. 1931. Limacodidae (Cochliopodidae). Seitz, *Macrolepid. World*, 10: 667-782.
 Yoshimoto, H. 1994. Limacodidae. Haruta, *Moths of Nepal*, part 3. *Tinea*, 14 (Suppl. 1): 85-89.

中国汉刺蛾属分类研究 (鳞翅目, 刺蛾科)

武春生 方承莱

中国科学院动物研究所国家动物博物馆 北京 100101

摘要 整理出中国汉刺蛾属 *Hampsonella* Dyar 2种, 包括 1新种, 微白汉刺蛾 *Hampsonella albidula*。编制了本属已知种的检索表, 提供了成虫彩色照片和外生殖器特征图。模式标本保存在中国科学院动物研究所国家动物博物馆。

微白汉刺蛾, 新种 *Hampsonella albidula* sp. nov. (图 2, 4)

本种外形与模式种汉刺蛾 *Hampsonella dentata* (Hampson) 相似, 但前翅中线外的大斑色暗, 而中央的浅色斑较小而

呈灰白色; 雄性外生殖器的爪形突末端只有很小的齿突, 抱器瓣较短, 基部明显窄于端部, 阳茎端基环侧面有指状突起可与模式种相区别。

正模 ♂, 浙江富阳, 1984-10-15 (L06292)。副模: 1 ♂, 江西石城, 1980-10-16; 1 ♂, 云南洱源平头山 1800 m, 1980-07-24 (L06293)。

分布: 浙江、江西、云南。

关键词 鳞翅目, 刺蛾科, 汉刺蛾属, 新种, 中国。

中图分类号 Q69.431.2